



Elers Road, W13

£1,950,000

Dexters



Elers Road, W13

This impressive Edwardian house is located in arguably the best location in Northfields backing onto Lammas Park and just moments from local shops.

Offering over 1900 sq.ft of well presented living space laid out over three floors.

On the ground floor there are two formal reception rooms, a guest WC, a fantastic full width rear extension which has lots of natural light overlooking the garden and Lammas Park beyond. The kitchen is well fitted with ample storage and integrated appliances.

On the two upper floors, there are five bedrooms, an ensuite shower room and the main family bathroom. Outside there is a mature South garden and off street parking to the front.

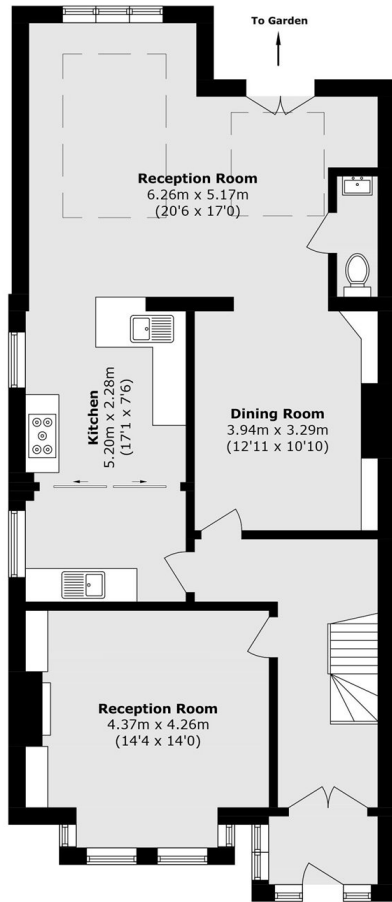
Truly a forever home to be proud of located within easy walking distance of the Piccadilly line station and well positioned for outstanding schools.

Features

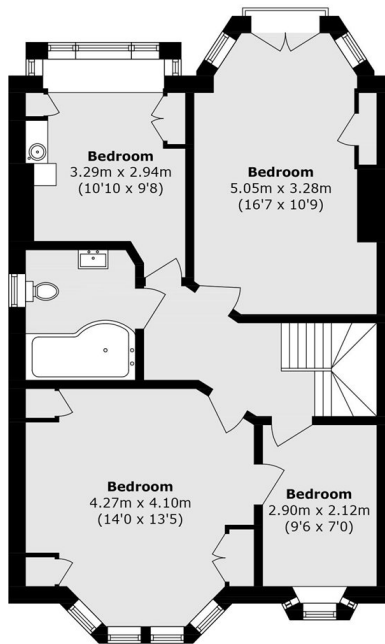
- Edwardian Semi Detached
- Five Bedrooms
- Three Receptions
- Excellent Schools
- South Facing Garden
- Off Street Parking



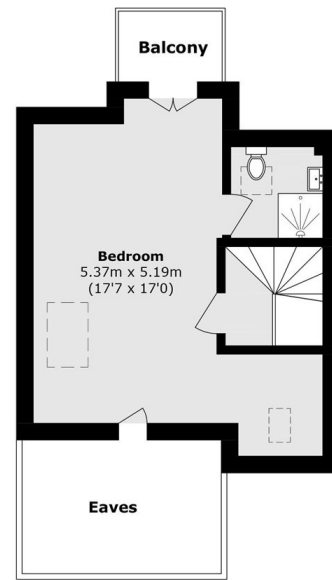
Elers Road, London, W13



Ground Floor



First Floor



Second Floor

Total area (approx.): 179.2 sq. m (1928.9 sq. ft)
(Excluding Eaves)
Balcony area (approx.): 2.1 sq. m (22.6 sq. ft)