



## Singapore Road, W13

£2,000 Per calendar month

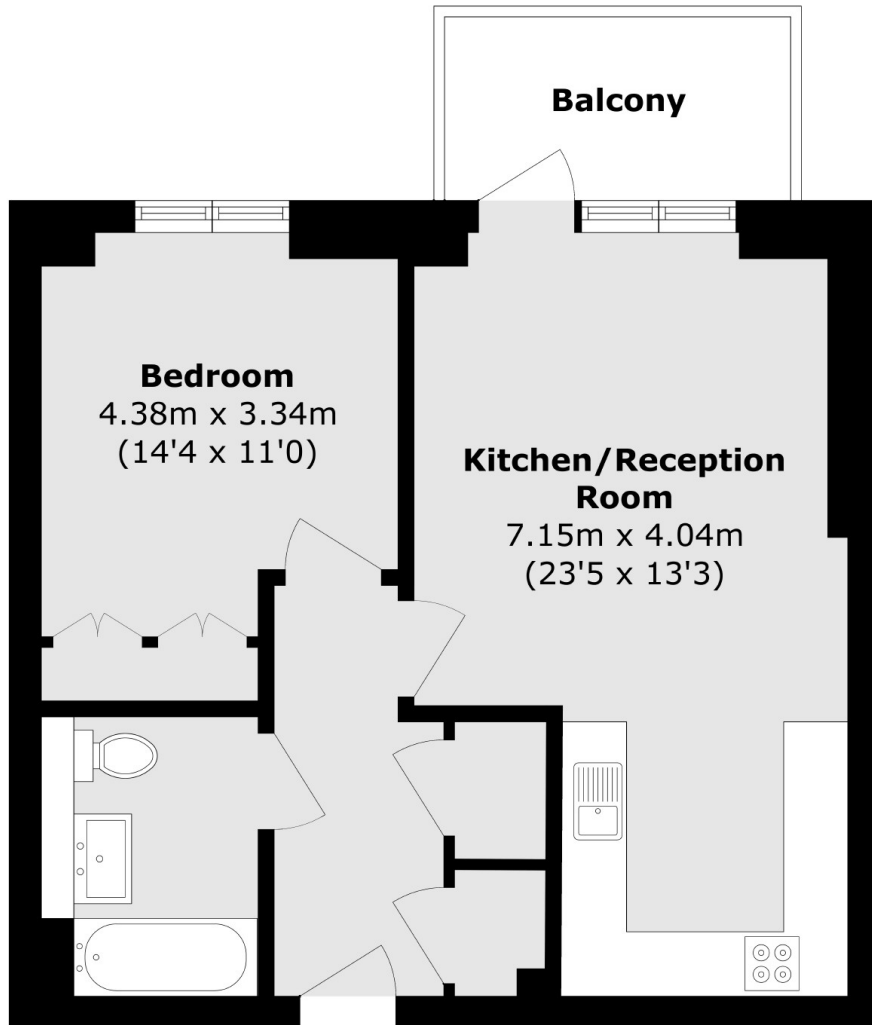
This recently built, one bedroom apartment offers modern living perfect for professionals commuting to the city. Ideal for those seeking contemporary design and convenience in a prime location.

This exciting development features communal gardens, a courtyard, an on-site café, and CCTV, providing a safe and tranquil environment for residents to enjoy.

### Features

- Recently Built
- One Bedroom
- Modern
- Close to Station
- Communal Garden
- Unfurnished

# Singapore Road, London, W13



Total area (approx.): 53.8 sq. m (579.1 sq. ft)

Balcony area (approx.): 5.5 sq. m (59.2 sq. ft)