



Denman Avenue, UB2

£375,000

This modern one-bedroom, first-floor apartment is now available, free from any chain restrictions. Boasting 560 square feet of living space, it features a spacious entrance hall, an expansive open-plan kitchen and entertainment area leading seamlessly onto a balcony, perfect for enjoying the outdoors.

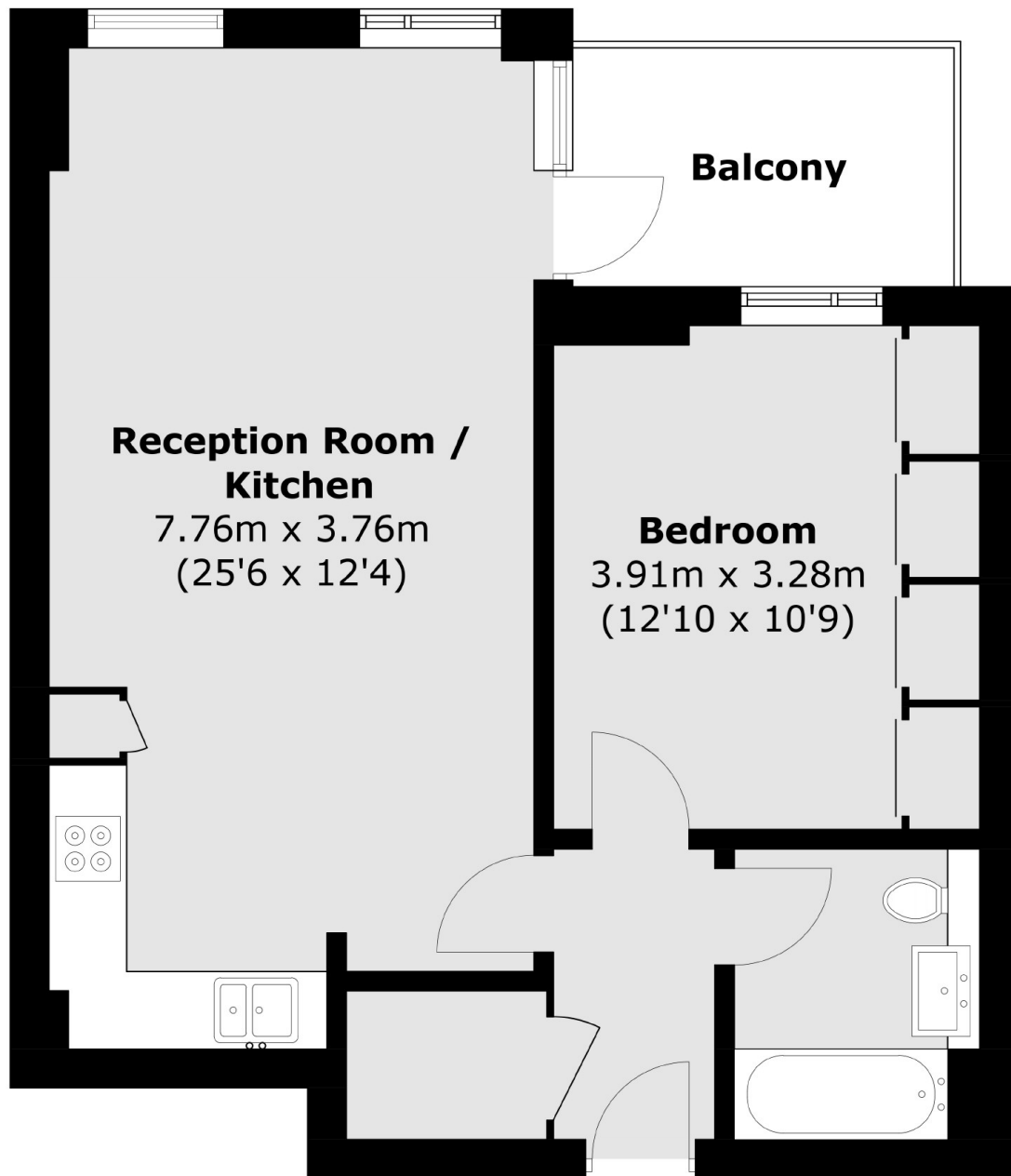
The apartment also includes a comfortable double bedroom complete with built-in wardrobes. Additional perks include allocated underground parking and an extended lease, making it an attractive option for prospective buyers.

Located less than a mile from Hanwell station (Elizabeth Line). Access to the Grand Union Canal and large meadows and parks. With access to Ealing and Heathrow Airport.

Features

- New Build
- Open Plan
- Double Bedroom
- Chain Free
- Long Lease
- Underground Parking

Denman Avenue, Southall, UB2



Total area (approx.): 52.1 sq. m (560.8 sq. ft)
Balcony area : 5.4 sq. m (58.1 sq. ft)