



## Drayton Green, W13

£2,200 Per calendar month

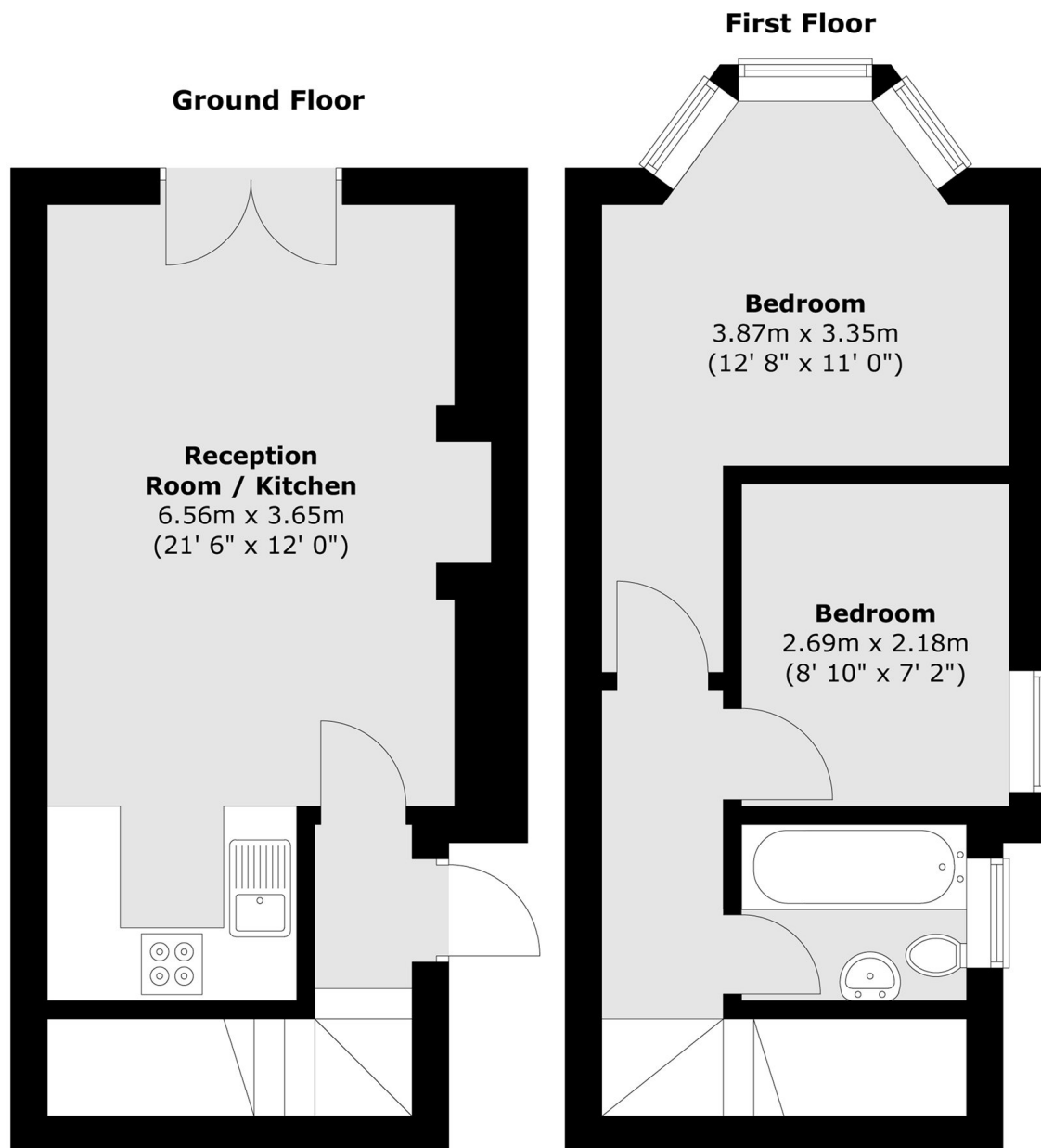
A rare two bedroom cottage with charming features, bright reception room with double doors leading to a private courtyard, ideal for barbeques and entertaining.

Drayton Green is just under half a mile from West Ealing Station, ideal for access to Paddington Station. Also excellent transport to Ealing Broadway and access to A40.

### Features

- Two Bedrooms
- Modern Kitchen
- Bright Reception Room
- Tiled Bathroom
- Private Patio
- Close to Station

# Drayton Green, London, W13



Total area (approx.) : 51.9 sq. m (559 sq. ft)