



## Oaklands Road, W7

£975,000

A beautifully presented end of terrace family home, offering spacious and stylish accommodation arranged over three floors. With five double bedrooms, two bathrooms and over 1,600 sq.ft of accommodation, there is ample space for the whole family.

The house is further enhanced by a garage, a guest WC and lovely south facing aspect, ensuring the property is flooded with natural light throughout while retaining a wonderful sense of space.

The house is ideally situated for a selection of excellent schools, parks and a choice of either Northfields or West Ealing train Stations with easy access to the city centre.

### Features

- End of Terrace
- Five Double Bedrooms
- South Facing Garden
- Garage
- Excellent Schools
- West Ealing (Elizabeth Line)



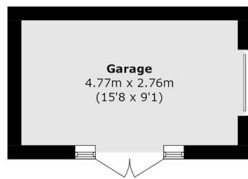
## Oaklands Road, W7

The entrance hall leads through to the bay windowed double front reception room. There is an inner lobby with a downstairs WC before you come to the very stylish kitchen/dining room with crittall doors to the garden.

On the first floor, there are three good sized bedrooms and the well fitted bathroom which has a separate shower. The top floor has been thoughtfully converted to create two double bedrooms with an additional bathroom. Outside is a well tended rear garden with a very useful separate garage.

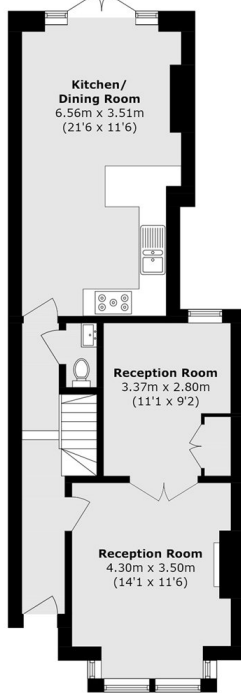


# Oaklands Road, London, W7

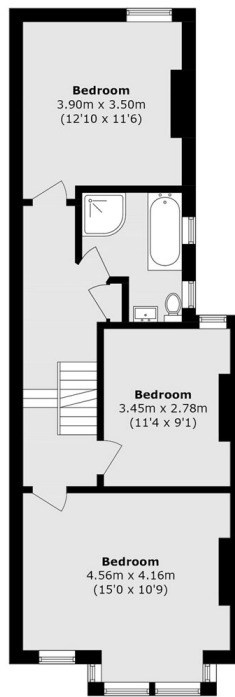


**Garage**

To Garden  
↑



**Ground Floor**



**First Floor**



**Second Floor**

Total Area (approx.): 153.7 sq. m (1654.4 sq. ft)

Garage area (approx.): 13.1 sq. m (141.0 sq. ft)

(Excluding Eaves)