



St. Kilda Road, W13

£450,000

An impressive garden flat laid out over the ground floor of this handsome Edwardian conversion.

Offered in excellent condition and retaining much of the original charm including a feature fireplace.

Comprises of entrance hall, front reception room, guest WC, well fitted kitchen/dining room, double bedroom and a very stylish bathroom.

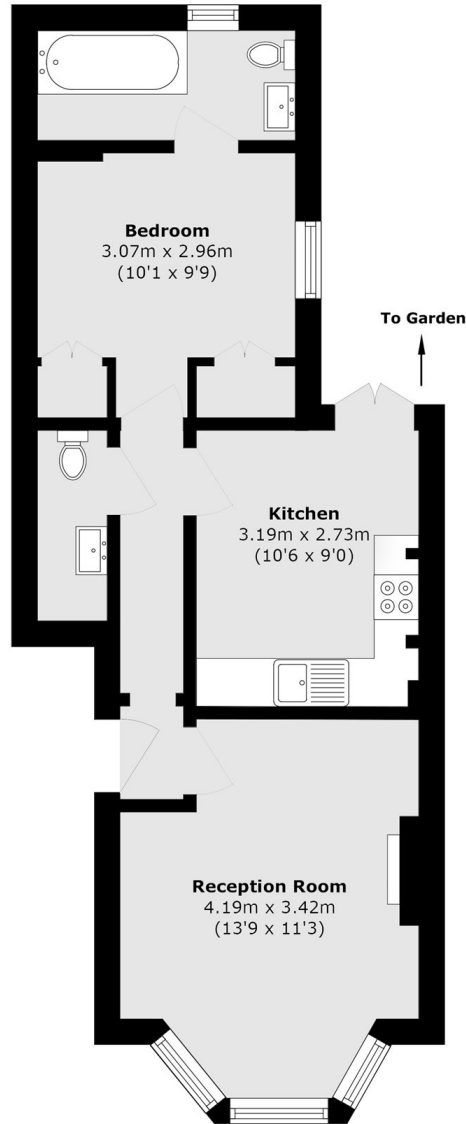
Outside is a well tended West facing private garden with side access.

Well nestled between Northfields station (Piccadilly line) and West Ealing station for the Elizabeth line.

Features

Garden Flat
West Facing Garden
Period Conversion
Close To Transport
Share Of Freehold
No Chain

St. Kilda Road, London, W13



Total area (approx.): 41.3 sq. m (444.5 sq. ft)