



## Elmbank Way, W7

£3,300 Per calendar month

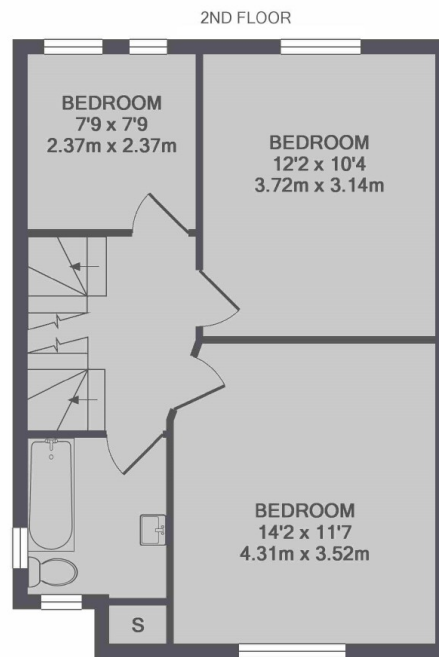
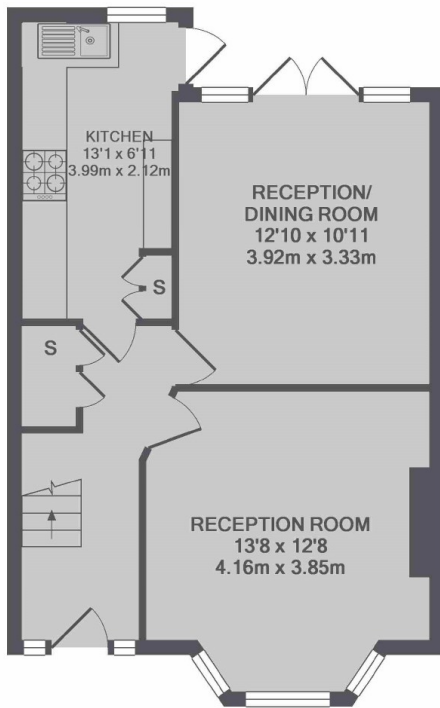
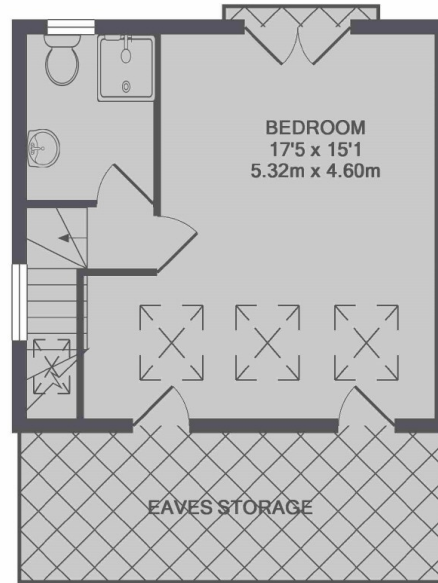
Charming end-of-terrace Mock Tudor four-bedroom home with two receptions, kitchen, conservatory, and two bathrooms. Benefits include off-street parking and a delightful south-facing rear garden, perfect for family living and entertaining.

Elmbank Way provides convenient access to Mayfield and Brentside schools, along with a variety of shops and excellent bus connections along Greenford Avenue, making it ideal for families and commuters alike.

### Features

- Four Bedrooms
- Two Bathrooms
- Rear Garden
- Off Street Parking
- Good Transport Links
- End of Terrace House

# Elmbank Way, London, W7



GROUND FLOOR

1ST FLOOR

TOTAL APPROX. FLOOR AREA 1297 SQ.FT. (120.5 SQ.M.)