



Churchfield Road, W13

£850,000

An outstanding three bedroom maisonette offering accommodation comparable to many houses locally and featuring a fabulous 80 ft. West facing garden.

Offered in turn key condition and with a Share of Freehold.

Located in this sought after residential enclave close to Walpole and Lammas Parks with easy access to West Ealing, Northfields and Ealing Broadway.

Features

- Victorian Maisonette
- Over 1000 Sq.Ft
- Share of Freehold
- 80 Ft. Landscaped Garden
- Excellent Condition
- Adjacent To Parks



Churchfield Road, W13

On arrival, you will be impressed with this four storey Victorian building set on the West side of the street.

When you step through the smart private front door, it will be immediately clear this is a special property in immaculate condition.

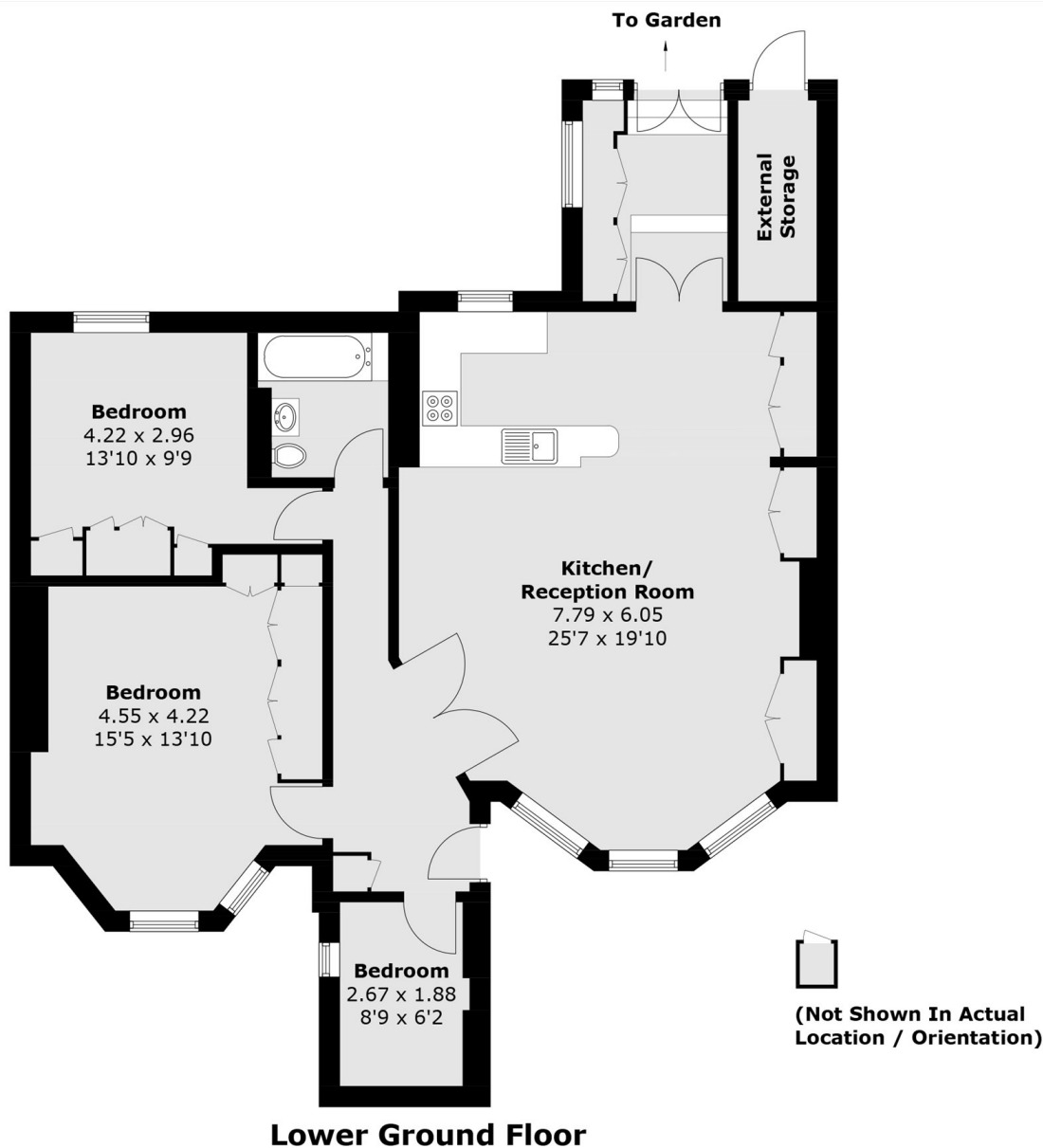
Off the entrance hall is a bedroom, currently used as a study. To the left you'll find two double bedrooms and a well-fitted bathroom, while to the right, the spacious reception room opens up, with oak parquet flooring running through to a high specification kitchen.

Beyond a useful utility area lies a private, south-west facing walled garden beautifully kept and thoughtfully landscaped.

Viewing comes highly recommended.



Churchfield Road, London, W13



Approx Internal Area: 99.4 sq. m (1,069.9 sq. ft)
External Storage : 3.7 sq. m (39.8 sq. ft)