



Middle Road, W7

£2,450 Per calendar month

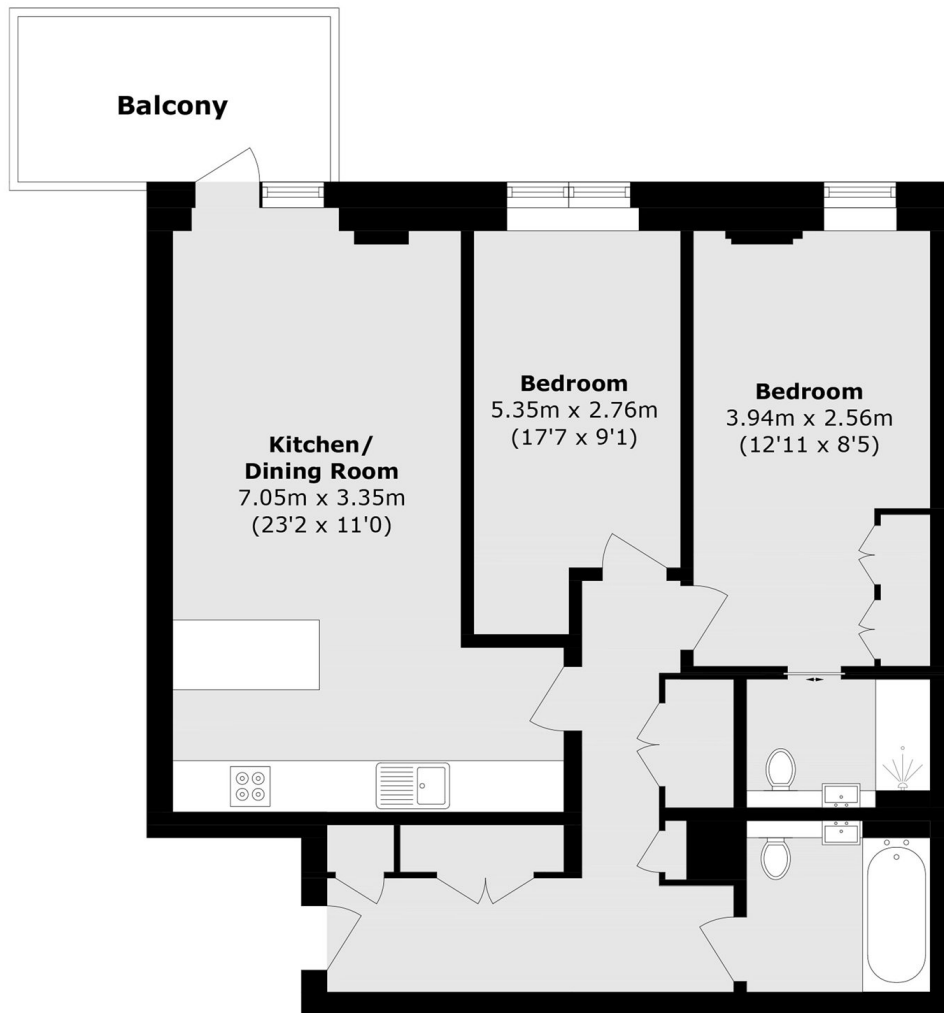
A modern two bedroom flat in newly developed Hanwell Square with access to a concierge, on site gym, and beautifully landscaped courtyards.

Hanwell Square offers excellent connectivity, just a 10-minute walk to Hanwell Station (Elizabeth Line), with quick access to Paddington, Bond Street, and Heathrow. Enjoy nearby pubs, cafes, and restaurants.

Features

- Two Bedrooms
- Two Bathrooms
- Modern Apartment
- Gym
- 24 hour Concierge
- Balcony

Middle Road, London, W7



Total area (approx.): 77.0 sq. m (828.8 sq. ft)

Balcony Total (approx.): 7.0 sq. m (75.3 sq. ft)