



Jordan Road, UB6

£1,800 Per calendar month

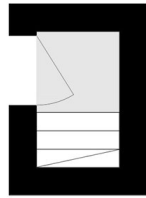
A sought-after two double bedroom first floor maisonette offering a spacious reception room, a separate kitchen, a bathroom and access to a private rear garden.

Jordan Road is conveniently situated close to Perivale (Central Line) and Alperton (Piccadilly Line) stations, providing excellent transport connections to Central London and beyond.

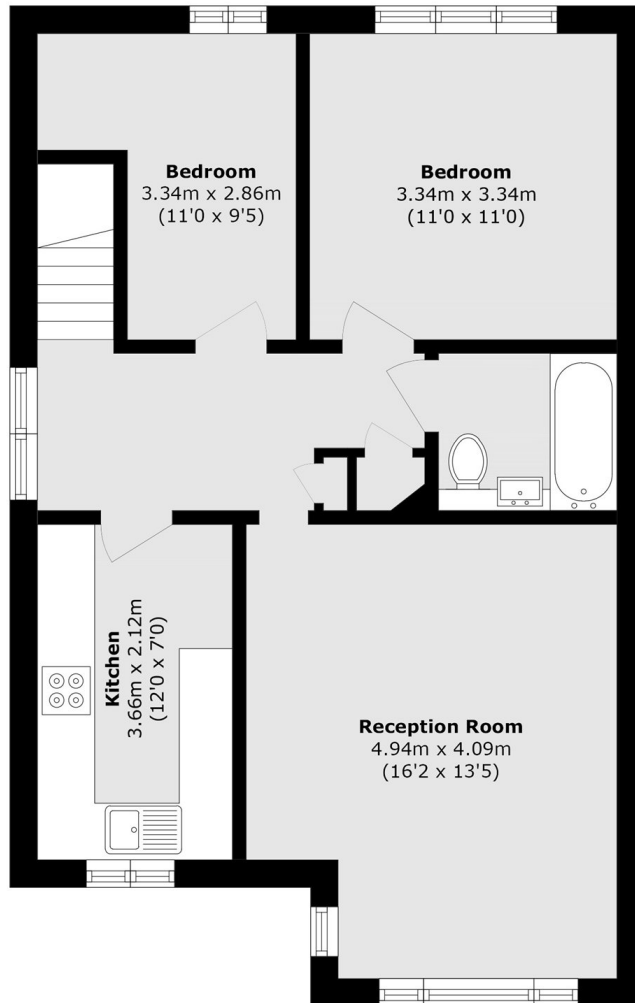
Features

- Two Bedrooms
- Separate Kitchen
- Maisonette
- Private Garden
- Large Reception
- Unfurnished

Jordan Road, Greenford, UB6



Ground Floor



First Floor

Total area (approx.): 61.8 sq. m (665.2 sq. ft)