



Swyncombe Avenue, W5

£1,100,000

This impressive four bedroom house is one of the most Eco efficient in the local area. Many features include a double car charge point, solar panels and high specification insulation.

Located in this increasingly popular area close to Northfields station (Piccadilly line) and outstanding schools including Gunnersbury and Ealing Fields High schools.

This is one of those properties that has too many extra features to list here so come and view and we'll talk you through them.

Features

- Four Bedroom House
- Eco Efficient
- Dual Car Charge Point
- Triple Glazing
- Close To Tube
- Excellent School Catchment



Swyncombe Avenue, W5

You will find the house adjacent to Blondin Park with off street parking for two cars.

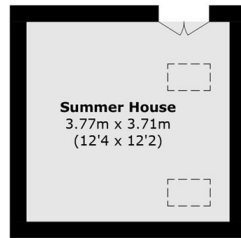
The entrance hall has a guest WC. There is a spacious front reception room and a full width rear living room which interconnects to the high specification kitchen and overlooking the well stocked established garden.

On the first floor there are two double bedrooms, a single bedroom and a modern bathroom. The top floor is a neat self contained studio with a kitchenette and shower room.

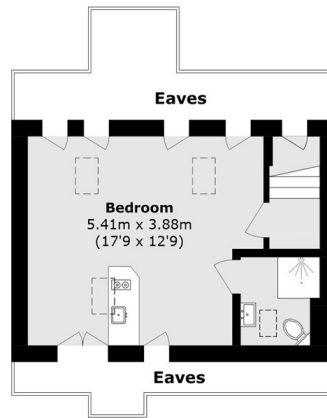
Outside, there is a very well built garden annexe. Must be viewed to be fully appreciated.



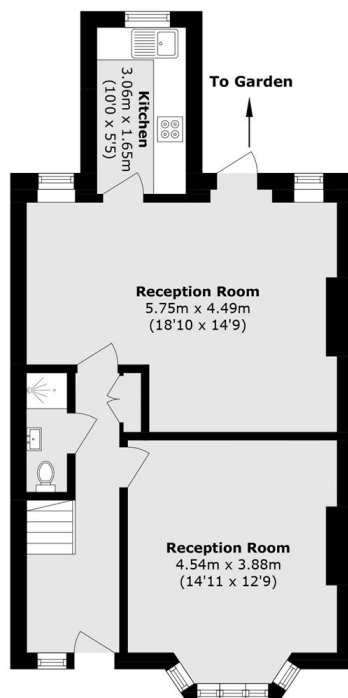
Swyncombe Avenue, London, W5



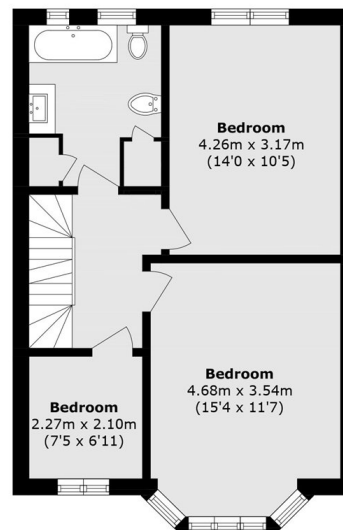
Ground Floor



Second Floor



Ground Floor



First Floor

Total area (approx.): 126.4 sq. m (1360.5 sq. ft)

(Excluding Eaves)

Outbuilding area (approx.): 13.9 sq. m (149.6 sq. ft)