



## Trent Avenue, W5

### £725,000

A two bedroom Victorian home with bundles of scope for extensions (subject to planning permissions) and a lovely West facing garden.

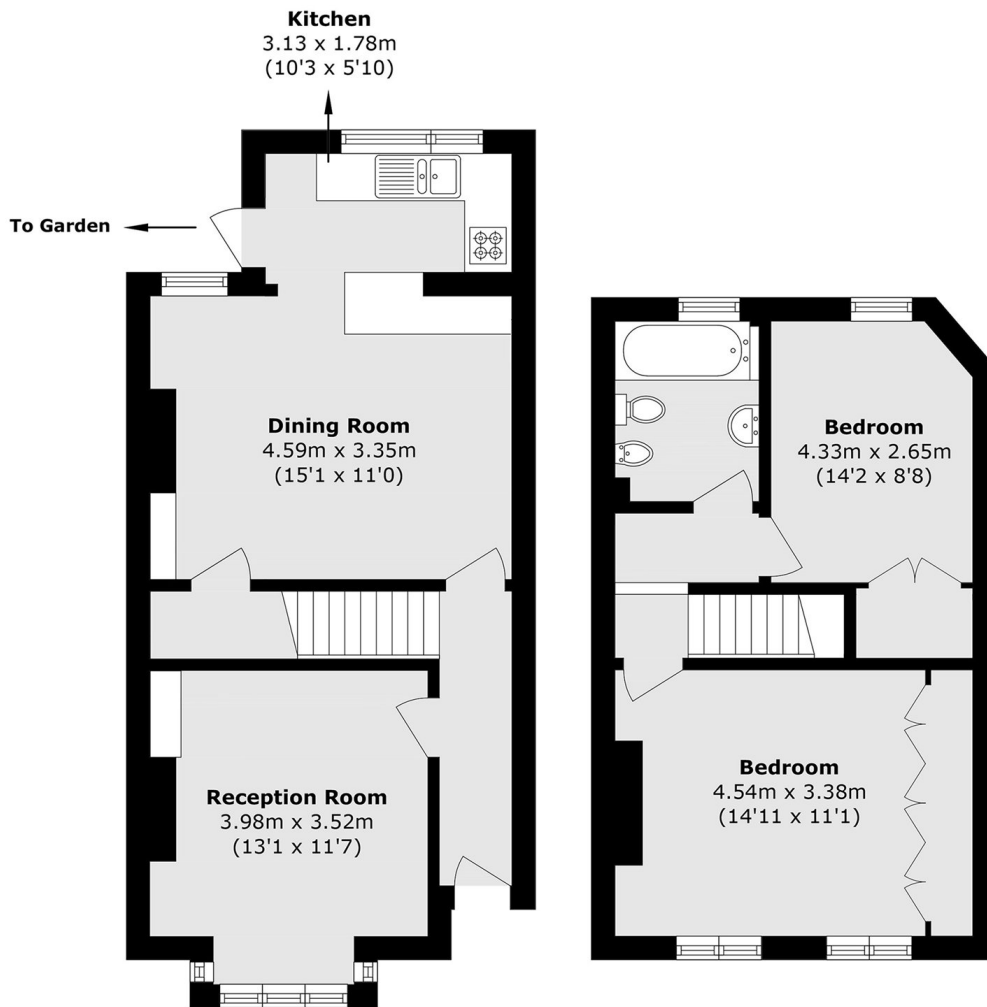
These houses are always popular so call us to arrange to view.

Set in a popular road nestled between both Northfield Avenue and South Ealing road with excellent schools, parks and the Piccadilly line right on your doorstep.

### Features

Victorian House  
Two Double Bedrooms  
Kitchen / Dining Room  
West Facing Garden  
Scope To Extend  
Close To Tube

# Trent Avenue, London, W5



**Ground Floor**

**Second Floor**

Total area (approx.): 78.6 sq. m (846.0 sq. ft)