



Wilkinson Close, NW2

£550,000

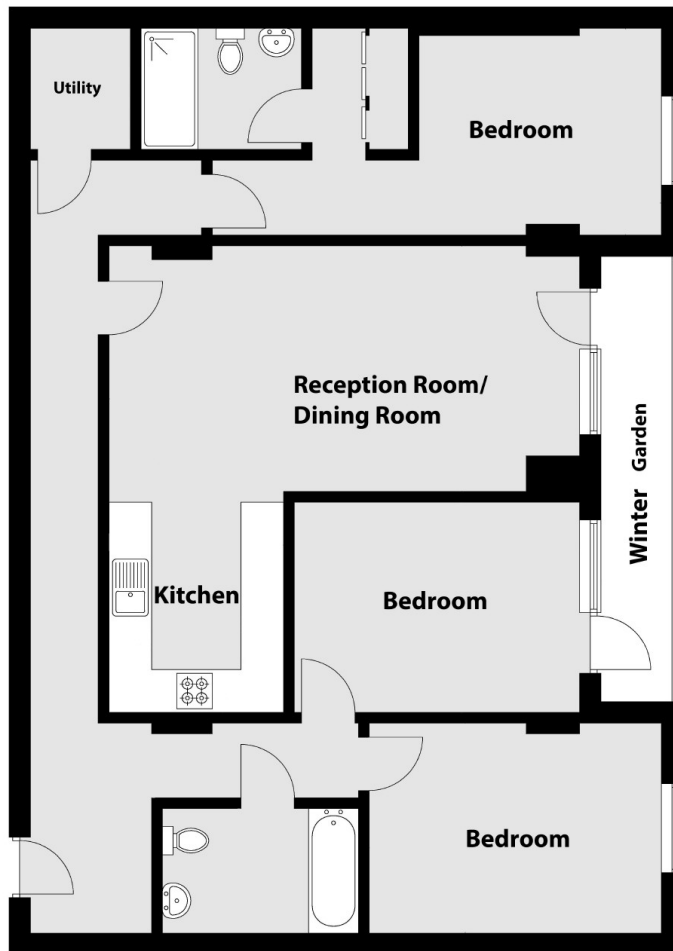
Situated on the fifth floor of a modern development, this flat offers over 1000sqft of living space with three double bedrooms, two bathrooms (one of which is an en suite) and a winter garden accessed via the open plan living room kitchen. The carpets throughout have also been replaced with wood flooring. The development also has a residential gym.

Collins Building is within the Fellows Square development and is a short distance from the new Brent Cross West Station (Thameslink), Brent Cross Shopping Centre and multiple road connections (A406, A41, M1).

Features

- Three Bedrooms
- Two Bathrooms
- Open Plan Living & Kitchen
- Winter Garden
- Underground Parking Space
- Chain Free

Wilkinson Close, London, NW2



(Not Shown In Actual
Location / Orientation)

Fifth Floor

Dexters

Cricklewood
28-30 Cricklewood Broadway
London
NW2 3HD
Sales
020 7794 7710

Energy Rating: B. We aim to make our particulars both accurate and reliable. However they are not guaranteed; nor do they form part of an offer or contract. If you require clarification on any points then please contact us, especially if you're traveling some distance to view. Please note that appliances and heating systems have not been tested and therefore no warranties can be given as to their good working order.

 **RICS** | Regulated
Estate Agent
and Letting Agent

[dexters.co.uk](https://www.dexters.co.uk)