



## Wilkinson Close, NW2

£600 Per week

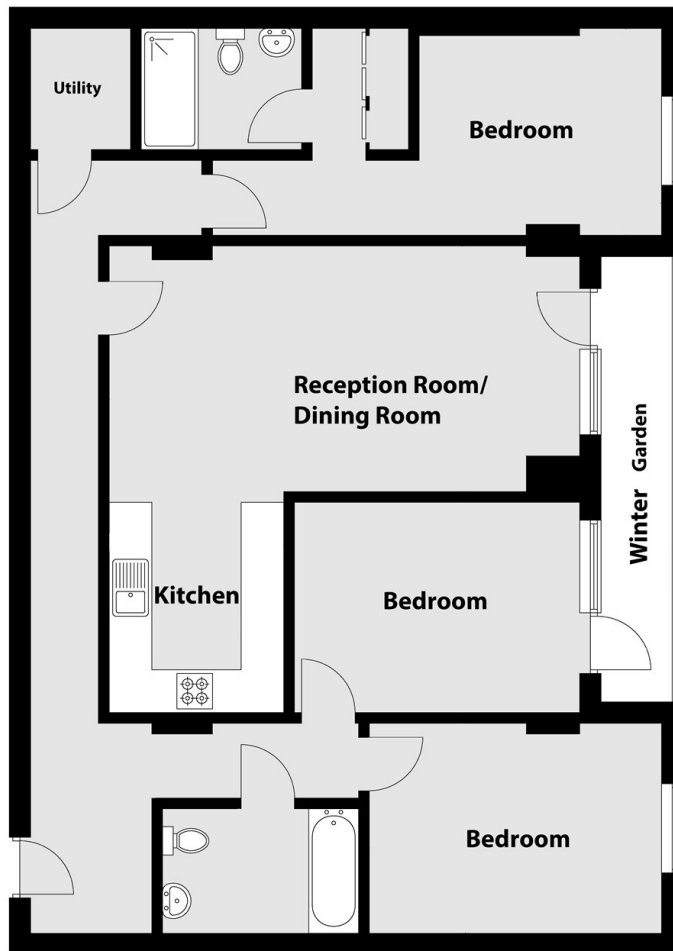
This modern three bedroom fifth floor flat offers a spacious open plan living area with a integrated fitted kitchen, three good size double bedrooms (one with en-suite bathroom), good storage space, a tiled family bathroom, and a well sized winter balcony. The carpets throughout have been replaced with wood flooring. The development also has a residential gym.

Wilkinson Close is ideally situated with a variety of amenities in Dollis Hill, Willesden, Cricklewood, and Brent Cross. The A5, A406, and M1 are also nearby, allowing easy access in and out of London.

### Features

- Three Bedrooms
- Two Bathrooms
- Winter Balcony
- Communal Gardens
- Allocated Underground Parking
- Residential Gym

# Wilkinson Close, London, NW2



(Not Shown In Actual  
Location / Orientation)

## Fifth Floor

**Dexters**

Cricklewood  
28-30 Cricklewood Broadway  
London  
NW2 3HD  
Lettings  
020 7794 1730

Energy Rating: . We aim to make our particulars both accurate and reliable. However they are not guaranteed; nor do they form part of an offer or contract. If you require clarification on any points then please contact us, especially if you're traveling some distance to view. Please note that appliances and heating systems have not been tested and therefore no warranties can be given as to their good working order.

 **RICS** | Regulated  
Estate Agent  
and Letting Agent

[dexters.co.uk](https://www.dexters.co.uk)