



Shoot Up Hill, NW2

£461 Per week

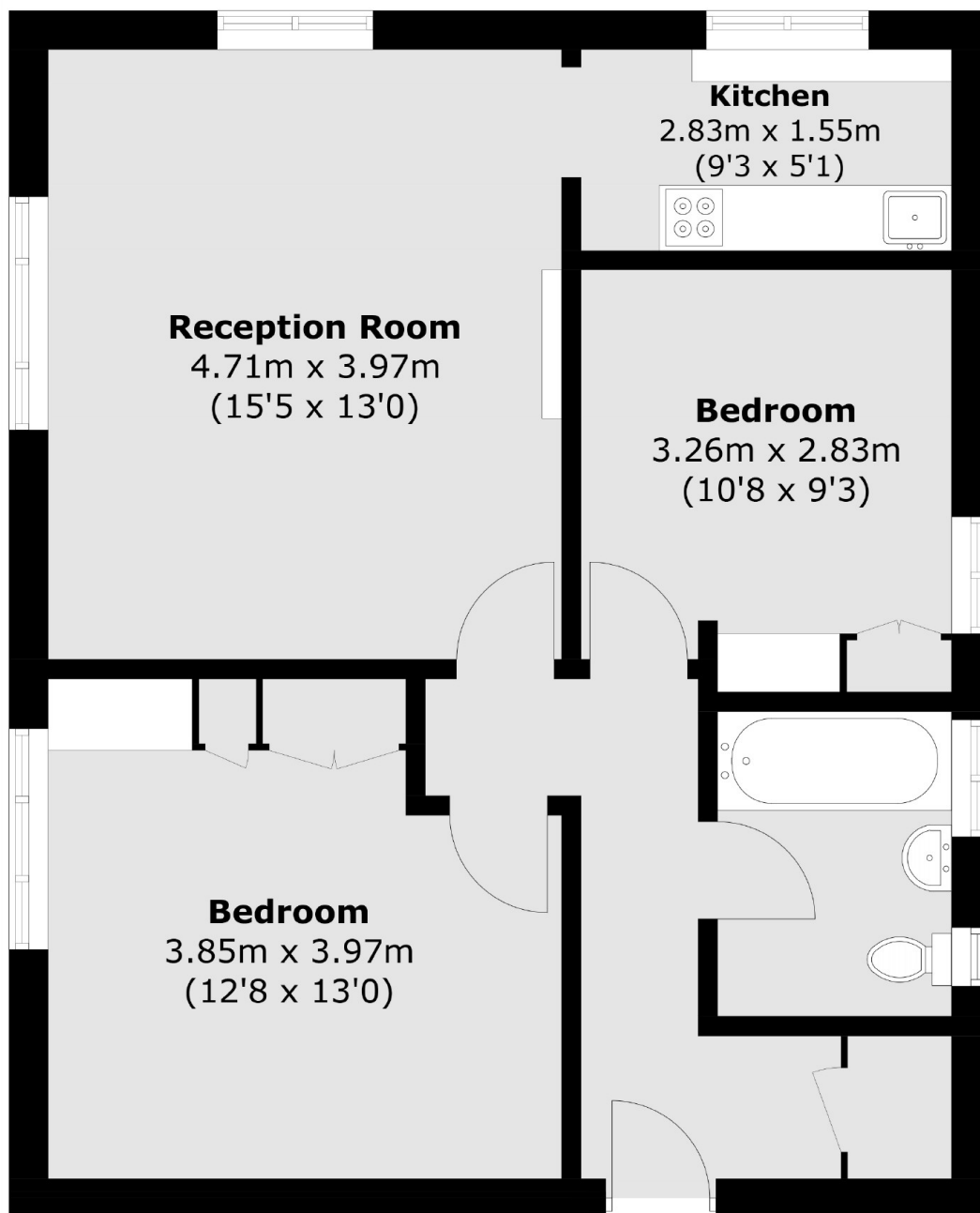
This two bedroom, second floor flat is in a sought after purpose built block ideally situated on Shoot Up Hill. The flat has a spacious reception, a separate kitchen, ample storage space, bathroom and separate WC. The flat is located on the second floor with lift access and access to a communal garden. Off-street parking is available on a first come basis.

Wiltern Court is close to the trendy shops and bars of West End Lane and is within easy reach of Kilburn station (Jubilee Line) and Brondesbury station (Overground) offering excellent access to the City.

Features

- Two Double Bedrooms
- Spacious Reception
- Second Floor With Lift Access
- Separate Kitchen
- Newly Redecorated
- Good Storage Space

Shoot Up Hill, London, NW2



Total area (approx.): 60.6 sq. m (652.3 sq. ft)

Dexters

Cricklewood
28-30 Cricklewood Broadway
London
NW2 3HD
Lettings
020 7794 1730

Energy Rating: C. We aim to make our particulars both accurate and reliable. However they are not guaranteed; nor do they form part of an offer or contract. If you require clarification on any points then please contact us, especially if you're traveling some distance to view. Please note that appliances and heating systems have not been tested and therefore no warranties can be given as to their good working order.

 **RICS** | Regulated
Estate Agent
and Letting Agent

[dexters.co.uk](https://www.dexters.co.uk)