

Kingweston Close, NW2

£484 Per week

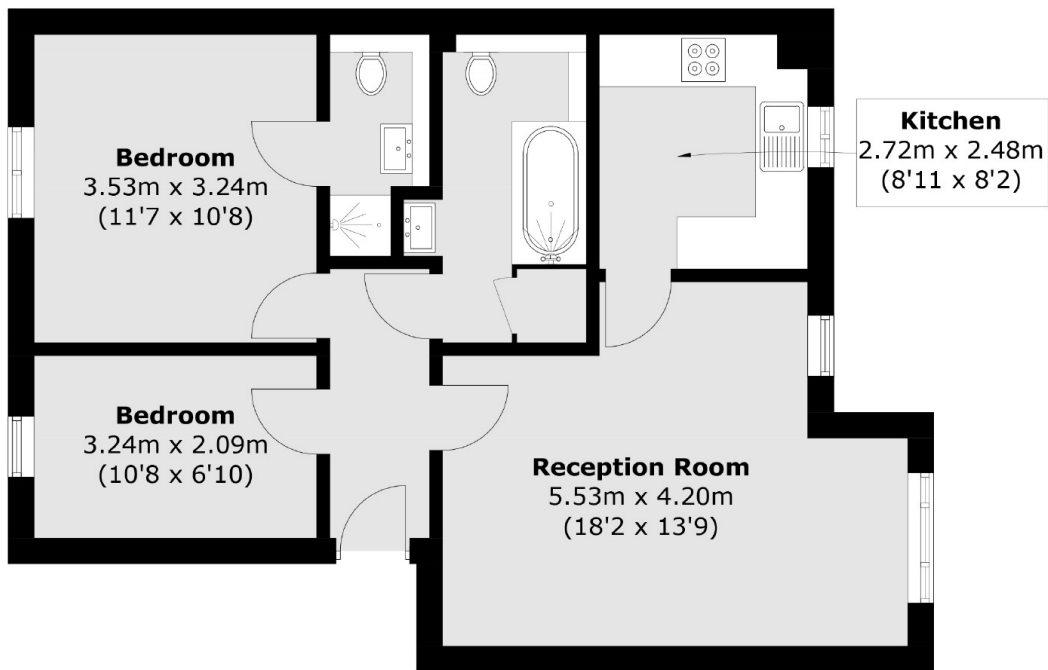
This newly refurbished two bedroom, two bathroom top floor flat is ideally situated close to local amenities and transport links. The property is in a purpose built block with a spacious reception room, a separate kitchen, tiled family bathroom and a well sized primary bedroom with an en-suite shower room.

Kingweston Close is well located close to Cricklewood Station (Thameslink), Cricklewood Broadway with a range of local amenities, restaurants, cafés, Brent Cross and excellent transport and motorway links.

Features

- Newly Refurbished
- Two Bedroom
- Two Bathrooms
- Separate Kitchen
- Spacious Reception
- Off Street Parking

Kingweston Close, London, NW2



Total area (approx.): 59.7 sq. m (642.6 sq. ft)