



Cumbrian Gardens, NW2

£650,000

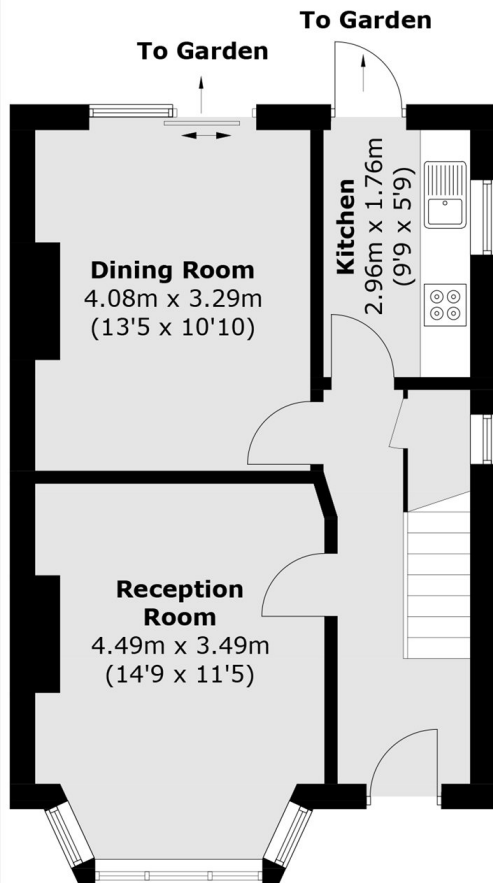
This three bedroom, two reception room semi-detached house is ideally situated in the Golders Green Estate. The house has potential for extension (STPP), a private rear garden, off-street parking, a garage and is being offered chain free.

Cumbrian Gardens is ideally located close to the many amenities and transport links. Golders Green, Hampstead and Finchley are near by in addition to Brent Cross shopping centre and the open spaces of Golders Hill Park and Hampstead Heath.

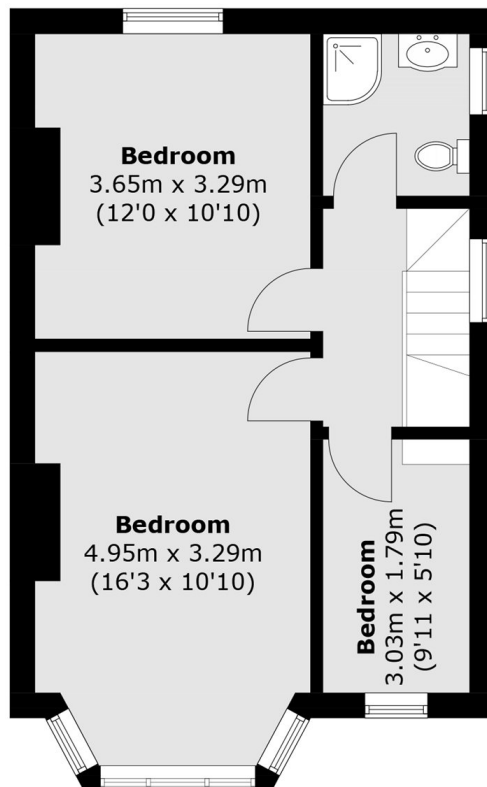
Features

Semi-Detached House
Three Bedrooms
Two Reception Rooms
Garage
Potential For Extension (STPP)
Chain Free

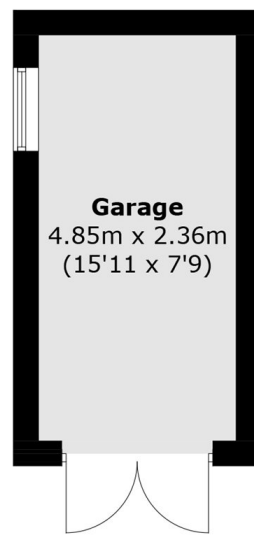
Cumbrian Gardens, London, NW2



Ground Floor



First Floor



(Not Shown In Actual
Location / Orientation)

Total area (approx.): 86.3 sq. m (928.9 sq. ft)
Garage: 11.7 sq. m (125.9 sq. ft)