



Willesden Lane, NW2

£426 Per week

This one bedroom second floor apartment is ideally situated in Willesden Green. The property has a spacious open plan living area with a fitted kitchen and access to a private balcony, a tiled bathroom with bath and shower, a well sized double bedroom and access to a communal garden.

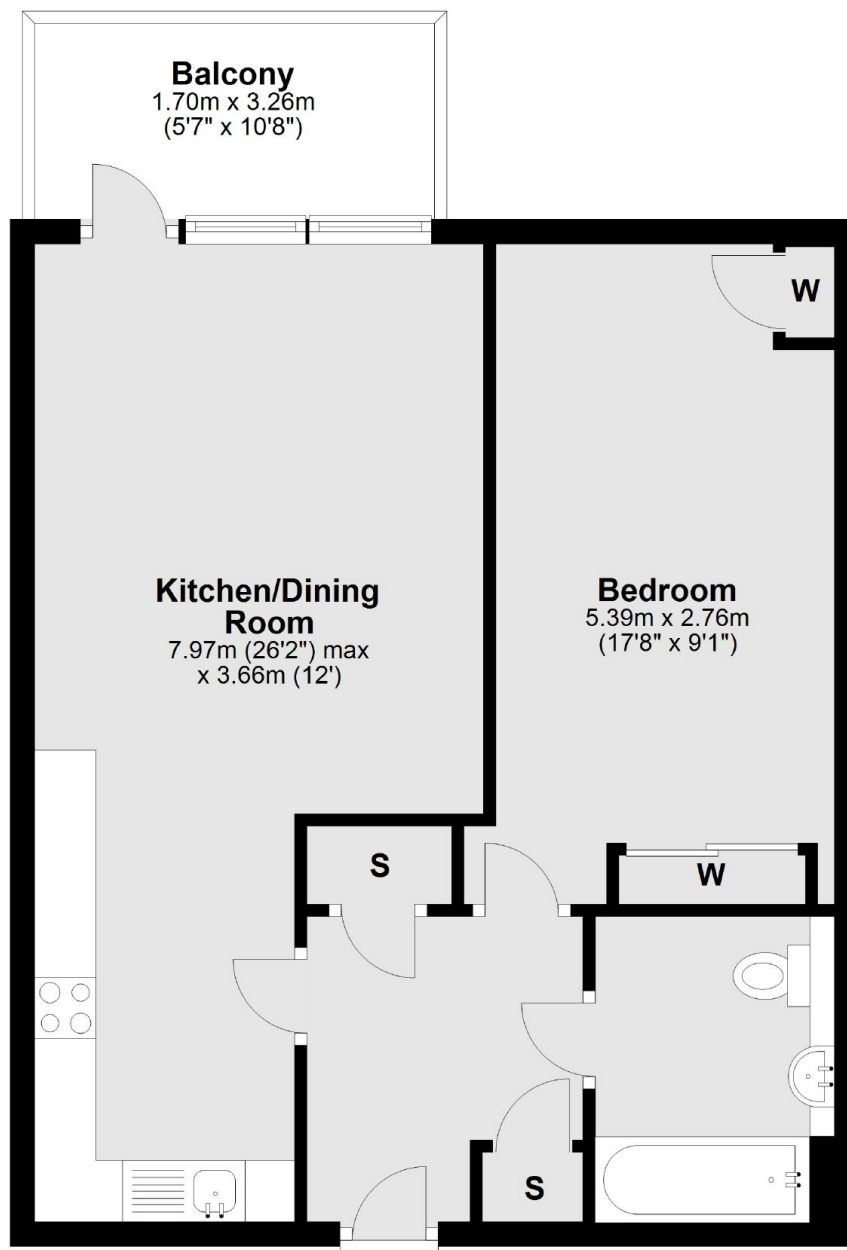
Walm Lane is well situated with Willesden Green and its many boutique cafés, restaurants and local amenities nearby. You also have excellent transport links with Willesden Green station (Jubilee line) and many bus routes on your doorstep.

Features

- One Bedroom
- Open Plan
- Fitted Kitchen
- Tiled Bathroom
- Communal Garden
- Private Balcony

**Willesden Lane,
London, NW2**

Second Floor



Main area: Approx. 52.0 sq. metres (559.9 sq. feet)

Plus balconies, approx. 5.5 sq. metres (59.7 sq. feet)

Dexters

Cricklewood
28-30 Cricklewood Broadway
London
NW2 3HD
Lettings
020 7794 1730

Energy Rating: . We aim to make our particulars both accurate and reliable. However they are not guaranteed; nor do they form part of an offer or contract. If you require clarification on any points then please contact us, especially if you're traveling some distance to view. Please note that appliances and heating systems have not been tested and therefore no warranties can be given as to their good working order.

 **RICS** | Regulated
Estate Agent
and Letting Agent

dexters.co.uk