

Melrose Avenue, NW2

£310,000

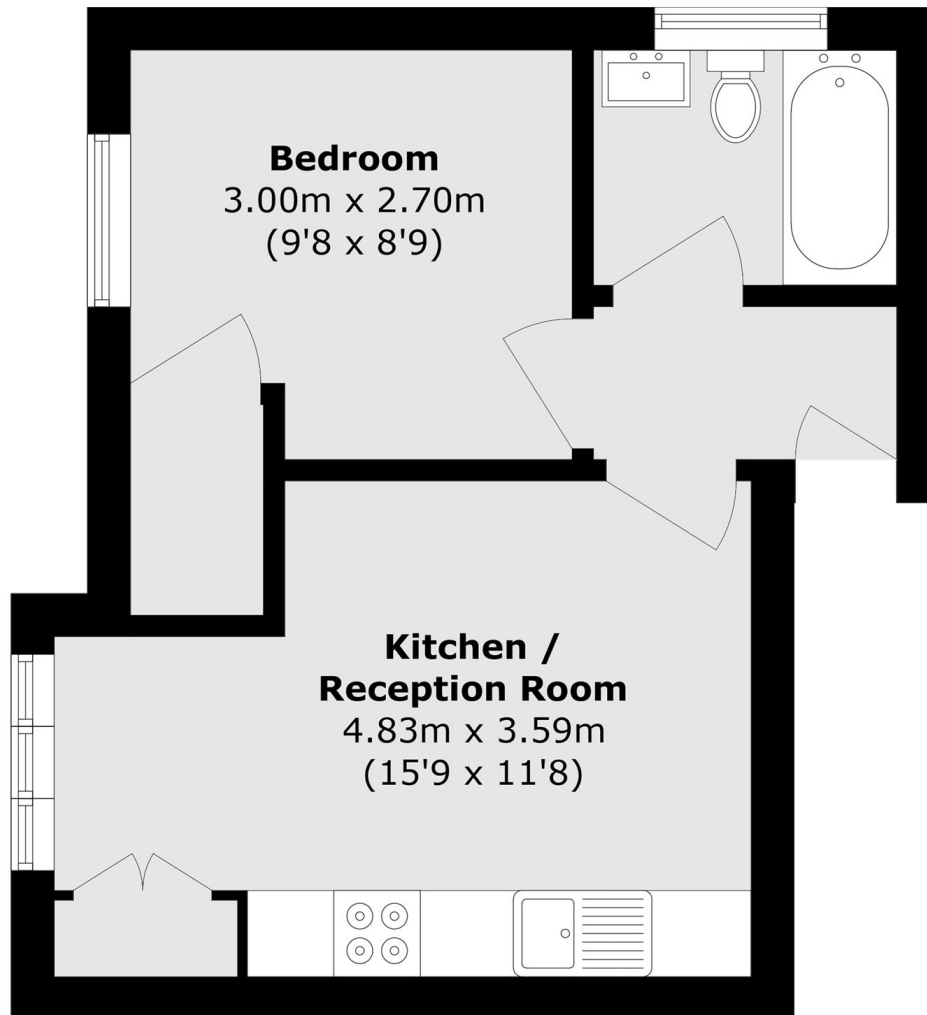
A well presented first floor one bedroom flat set within a period conversion, offered to the market with no onward chain. The property comprises a bright open plan reception room with fitted kitchen, a good sized double bedroom and a modern bathroom. Further benefits include double glazing, gas central heating and a long lease.

Melrose Avenue is conveniently located close to Willesden Green station, with the shops, cafés and amenities of Walm Lane nearby, as well as the open spaces of Gladstone Park.

Features

First Floor Flat
One Double Bedroom
Open Plan Reception Room
Fitted Kitchen
Long Lease
Chain Free

Melrose Avenue,
London, NW2



Total area (approx.): 31.8 sq. m (342.3 sq. ft)