



Latchmere Road, SW11

£725,000

Dexters



Latchmere Road, SW11

A fully refurbished to the highest of standards three bedroom apartment on the sought after Latchmere Road. The property comprises of a large open plan reception/kitchen/dining room, three double bedrooms, two bathrooms (Inc en-suite) & private roof terrace with stunning views of London. The property benefits further from being sold with a share of the freehold, is being sold chain free, comes with warranties on Bi-fold doors/kitchen appliances/furniture/worktops & electrical installation. This property truly is futureproof.

Through the front door and to the right you have a spacious open plan reception/kitchen with integrated premium branded appliances, this room leads out to the private roof terrace through bifold doors and has stunning herringbone flooring throughout. The family bathroom is located in the middle of the property and through to the front of the apartment you have three double bedrooms with built in storage and an en-suite in the Principal bedroom.

Latchmere Road is perfect for commuting from Clapham Junction into Central London and to Gatwick Airport. The green spaces of Clapham Common and Battersea Park are nearby, as are plenty of local pubs, restaurants and shops.

Features

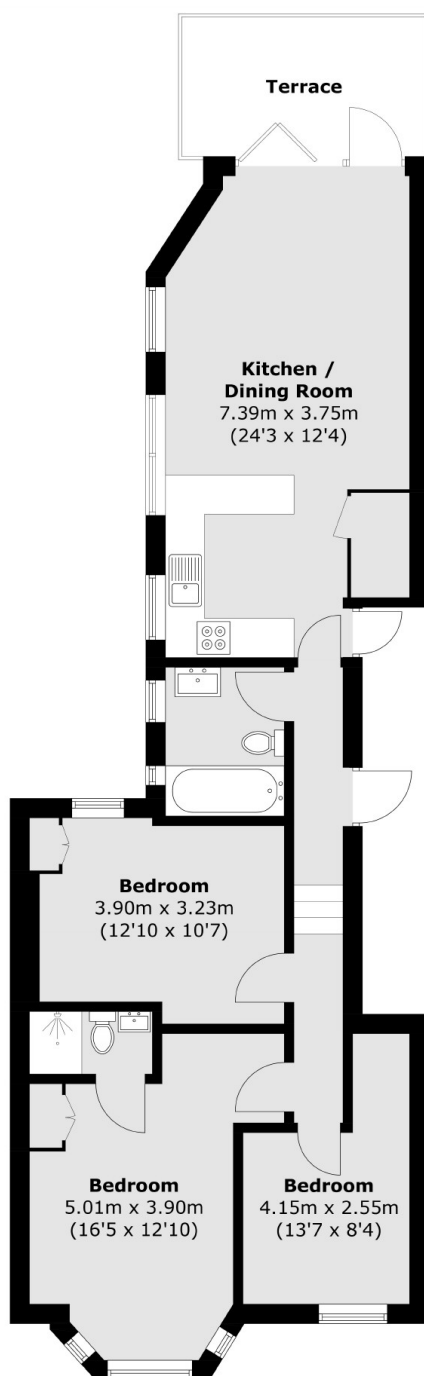
- Three Double Bedrooms
- Private Roof Terrace
- Two Bathrooms
- Share Of Freehold
- Numerous Warranties
- Chain Free







Latchmere Road, London, SW11



Total area (approx.): 75.1 sq. m (808.4 sq. ft)
Terrace: 8.0 sq. m (86.1 sq. ft)