



Eckstein Road, SW11
£850,000

Dexters



Eckstein Road, SW11

An exceptional split level Victorian conversion presented in immaculate order throughout measuring just shy of 1,200 Sq Ft. Comprising a large reception room with high ceilings and multiple comfortable seating areas, a separate eat-in kitchen, dining room, three double bedrooms, family bathroom & separate WC. The property benefits further from a decked terrace, large private garden and has a share of the freehold.

As you enter the property you have an eat-in kitchen with integrated appliances at the rear which opens out to a terrace leading down to a private & spacious garden, a great space for entertaining. As you head through the hallway there is a WC and to the front of the property is the large reception room & dining area. Upstairs you have three double bedrooms and a family bathroom.

Eckstein Road is located within an easy walk to Clapham Junction overground and the many shops, restaurants & gyms on both Lavender Hill, St. John's Road & Northcote Road. The green spaces of Clapham Common and Wandsworth Common are also nearby.

Features

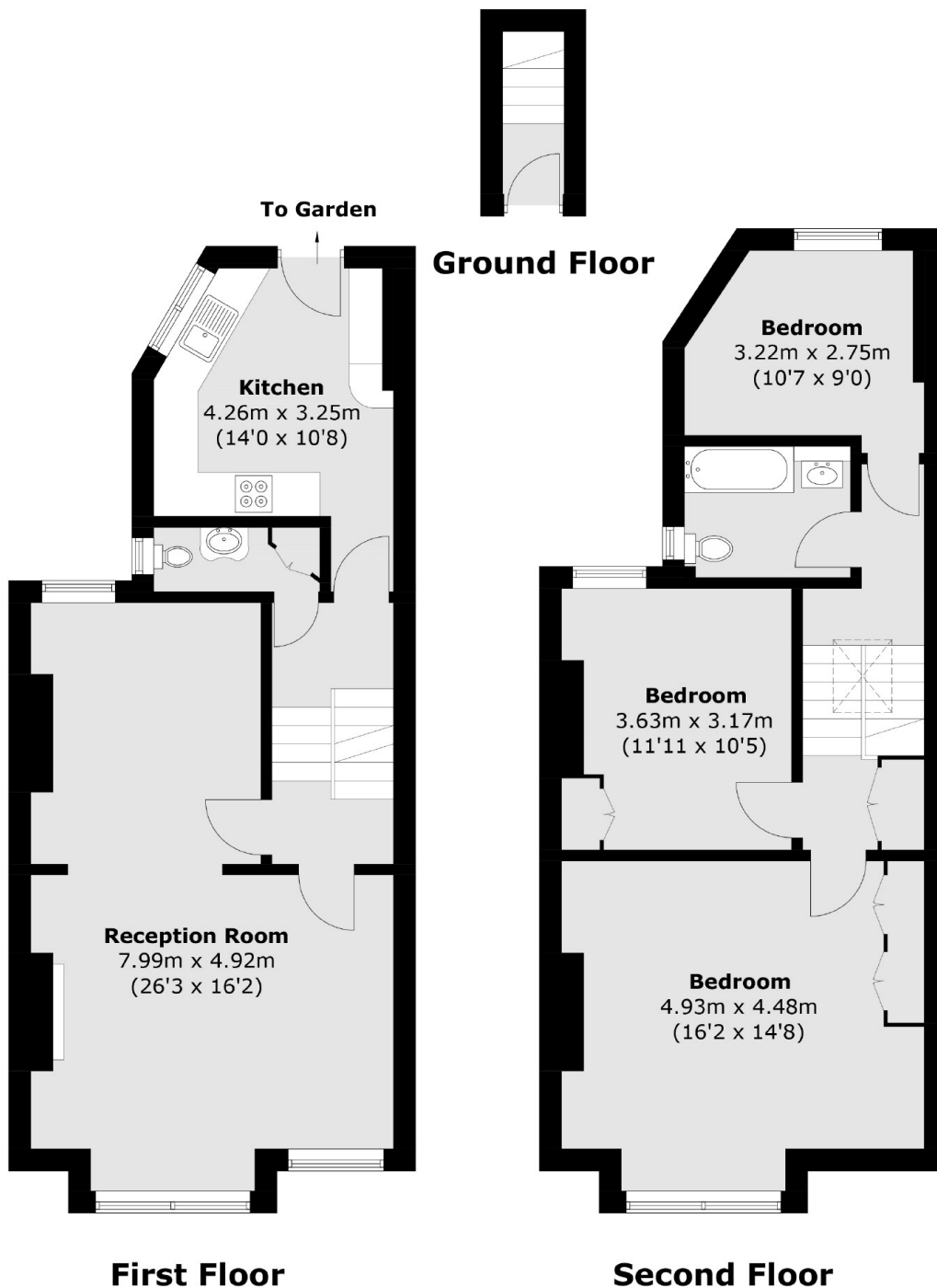
- Victorian Conversion
- Three Double Bedrooms
- Family Bathroom & WC
- Private Garden & Terrace
- Share Of Freehold
- Measuring Circa 1,200 Sq Ft







Eckstein Road,
London, SW11



Total area (approx.): 106.9 sq. m (1,150.6 sq. ft)

Dexters

Northcote Road
93 St. John's Road
London
SW11 1QY
Sales
020 7483 6333

Energy Rating: . We aim to make our particulars both accurate and reliable. However they are not guaranteed; nor do they form part of an offer or contract. If you require clarification on any points then please contact us, especially if you're traveling some distance to view. Please note that appliances and heating systems have not been tested and therefore no warranties can be given as to their good working order.

 **RICS** | Regulated
Estate Agent
and Letting Agent

[dexters.co.uk](https://www.dexters.co.uk)