



Victorian Heights, SW8

£800,000

Dexters



Victorian Heights, SW8

A stunning two double bedroom split-level Victorian school conversion. The property comprises of an oversized reception room with vaulted ceilings, eat-in kitchen & two bathrooms (inc en-suite). The property benefits further from communal gardens, allocated off street parking, owns a share of the freehold & is being sold chain free.

Set behind secure gates with intercom, CCTV & a residents lift which is rarely seen in these types of properties, this development offers a great mix of historical period charm and the comfort of modern living.

This loft-style apartment is very unique and rarely available, designed to make the most of the large living space created from an old classroom with double height ceiling.

Victorian Heights is located on Thackeray Road in the heart of Diamond conservation area, a peaceful road close to the shops, bars and restaurants on Queenstown Road, Battersea Park Road, and Lavender Hill. This property is also a short distance from Clapham Common, Battersea Park and provides excellent access to the City with local transport links including Clapham Common Tube (Northern line), Queenstown Road Station) & Wandsworth Road overground.

Features

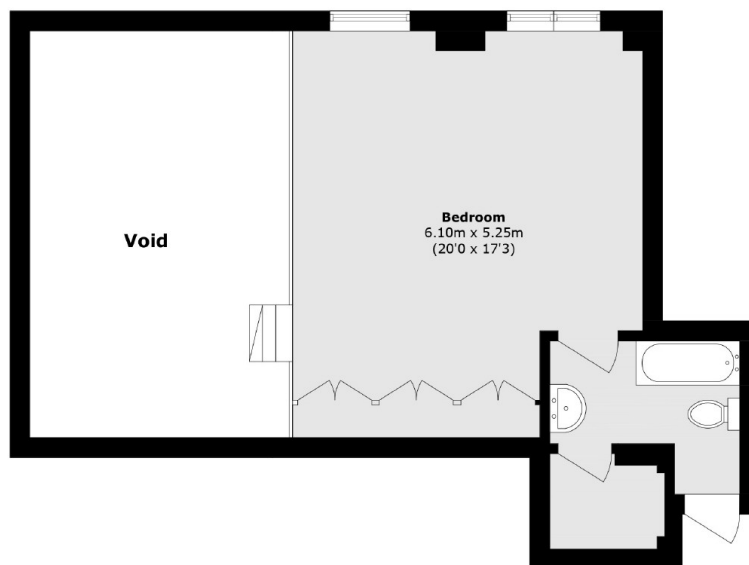
- Victorian School Conversion
- Two Double Bedrooms
- Two Bathrooms
- Vaulted Ceilings
- Allocated Gated Parking
- Chain Free



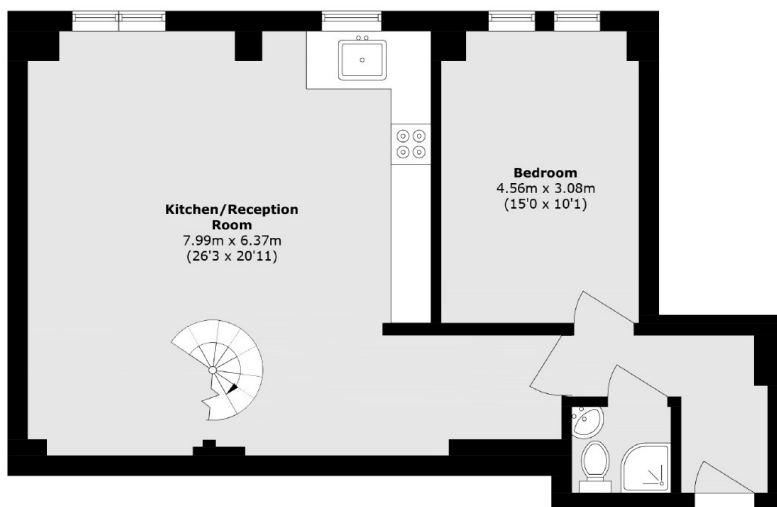




Victorian Heights, London, SW8



Third Floor



Second Floor

Total area (approx.): 102.2 sq. m (1100.0 sq. ft)
(Excluding Void)