



**Prince Of Wales Drive, SW11**

**£695,000**

**Dexters**



## Prince Of Wales Drive, SW11

A beautiful two double bedroom apartment in a prestigious mansion block on the sought after Prince Of Wales Drive, located opposite Battersea Park & moments from the iconic Battersea Power Station. The property comprises a large open plan reception room/kitchen & two bathrooms.

As you head into the property you have a wide and welcoming hallway. To the left hand side you have a modern family bathroom finished to an immaculate standard. Through the hallway you have an exceptionally large open plan reception/kitchen/dining area, the perfect space for entertaining and relaxing alike. To the rear of the property you have two double bedrooms with high ceilings and the second bathroom completes the accommodation.

Prince Of Wales Drive offers excellent transport links to the rest of London. The nearby overground provides access into Waterloo & Victoria with the nearby tube (Northern Line) getting you into the City & Central London. Kings Road and Battersea Power Station development are a short stroll across the park.

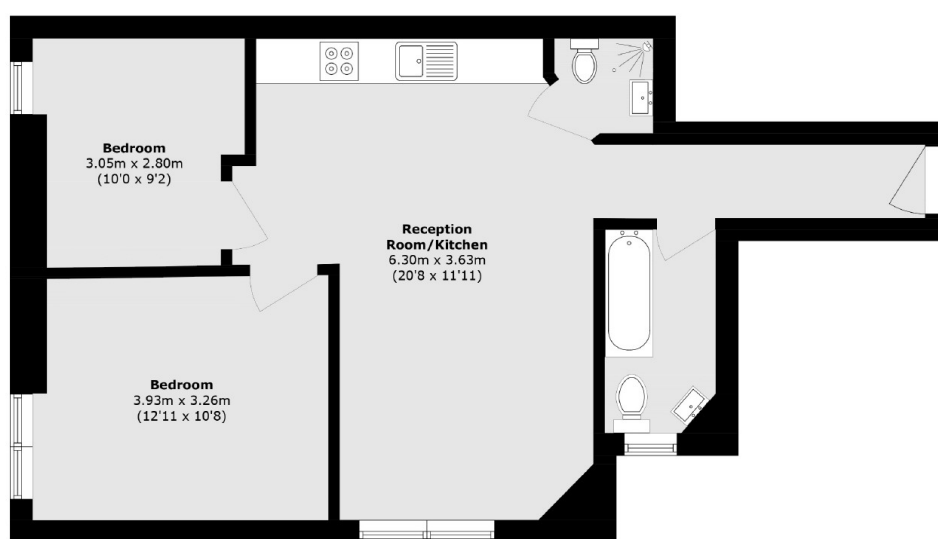
### Features

- Prince Of Wales Mansions
- Two Double Bedrooms
- Open Plan Reception/Kitchen
- Two Bathrooms
- Opposite Battersea Park
- Refurbished





# Prince Of Wales Drive, London, SW11



Total area (approx.): 59.9 sq. m (645.0 sq. ft)