



## Gambetta Street, SW8

### £625,000

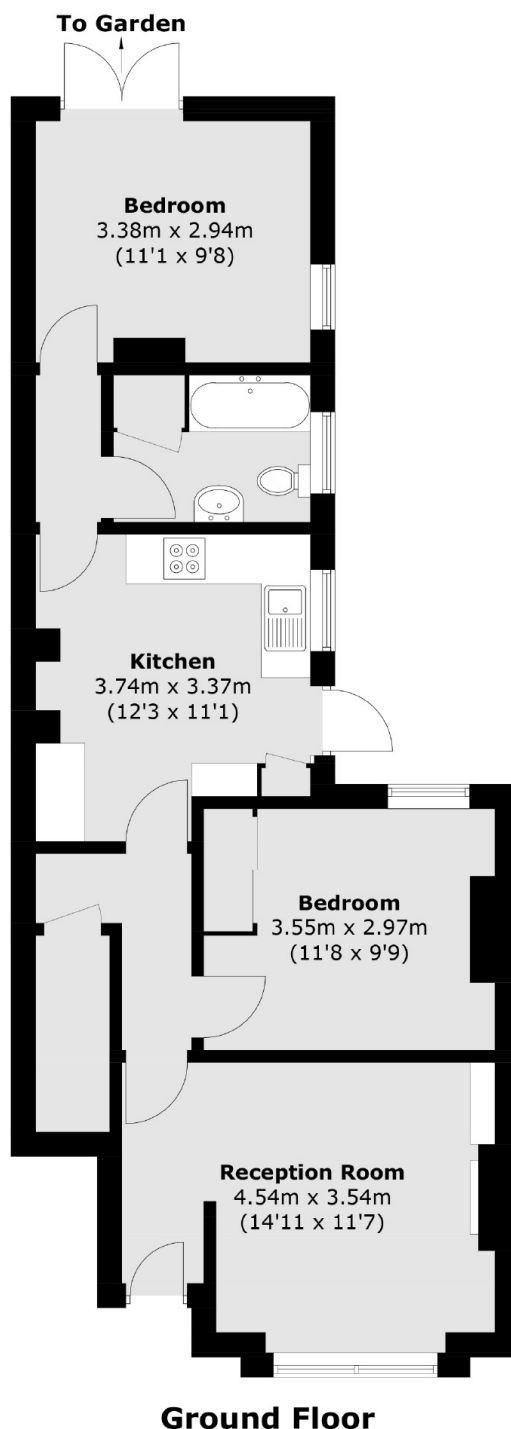
A spacious ground floor maisonette on the sought after Gambetta Street. Arranged to include a reception room, modern kitchen, private garden, two double bedrooms and a spacious bathroom. The property benefits from its own front door, has a share of freehold, has extension potential (STPP) and is being sold chain free.

Gambetta Street is located on a quiet residential road within the popular 'Diamond Conservation' area, the flat is within easy reach of the amenities of Queenstown Road and local transport links including the Northern Line extension. The iconic Battersea Power Station & Battersea Park are a short stroll away.

### Features

- Two Double Bedrooms
- Own Front Door
- Private Garden
- Share Of The Freehold
- Modern Kitchen
- Chain Free

# Gambetta Street, London, SW8



Total area (approx.): 61.7 sq. m (664.1 sq. ft)

## Dexters

Northcote Road  
93 St. John's Road  
London  
SW11 1QY  
Sales  
020 7483 6333

Energy Rating: D. We aim to make our particulars both accurate and reliable. However they are not guaranteed; nor do they form part of an offer or contract. If you require clarification on any points then please contact us, especially if you're traveling some distance to view. Please note that appliances and heating systems have not been tested and therefore no warranties can be given as to their good working order.

 **RICS** | Regulated  
Estate Agent  
and Letting Agent

[dexters.co.uk](https://www.dexters.co.uk)