

**Wakehurst Road**  
Between the Commons, SW11

**Dexters**





## About the property

Arranged over three floors, an impressive five bedroom Victorian home measuring over 2,500 sq.ft. The property offers a spacious double reception room, a kitchen, and a conservatory extension providing ample space for dining.

It also features three bathrooms and a garden with mature fruit trees. It is located directly opposite the highly regarded Belleville Primary School, which is rated outstanding by Ofsted.

Situated just off Northcote Road, between Clapham Common and Wandsworth Common. Clapham Junction is nearby as well as an array of shops, bars, restaurants located near Northcote Road. There are also a number of excellent state and private schools.

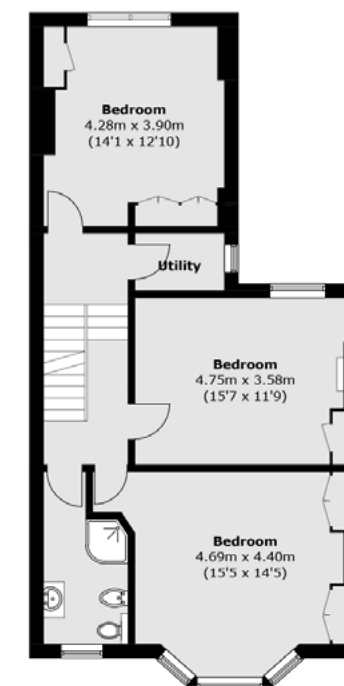
## Key features

Between The Commons  
Over 2,500 sq. ft  
Semi-Detached  
Transport Links Nearby  
Five Bedrooms  
Three Bathrooms

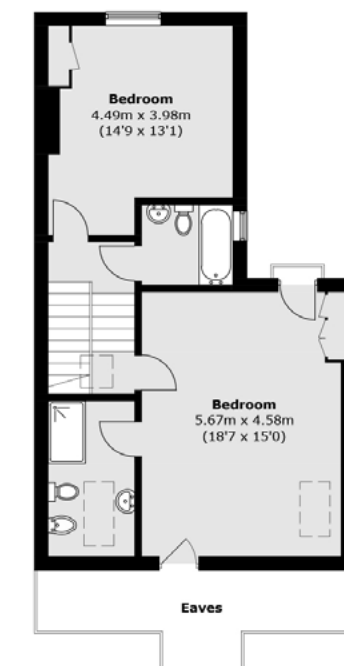




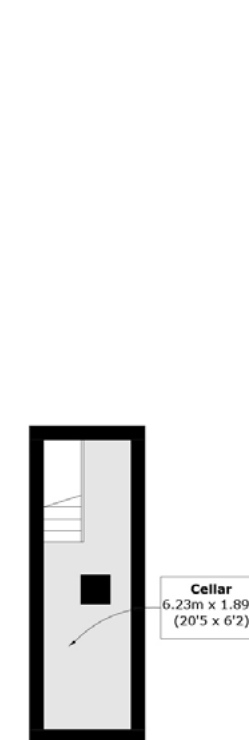




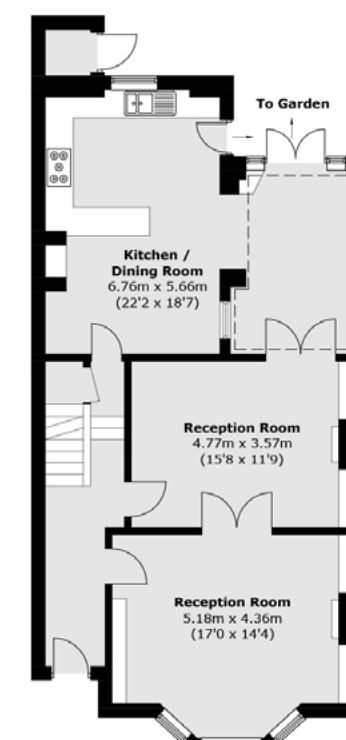
First Floor



Second Floor



Basement Floor



Ground Floor

TOTAL APPROX. FLOOR AREA 2469.1 SQ. FT (229.4 SQ. M)(INCLUDING BASEMENT)  
EXTERNAL CUPBOARD 11.8 SQ. FT (1.1 SQ. M) (EXCLUDING EAVES)

Energy Rating: C. We aim to make our particulars both accurate and reliable. However they are not guaranteed; nor do they form part of an offer or contract. If you require clarification on any points then please contact us, especially if you're traveling some distance to view. Please note that appliances and heating systems have not been tested and therefore no warranties can be given as to their good working order.





Dexters Northcote Road  
93 St John's Road  
London, SW11 1QY  
020 7483 6333

# Dexters