



**Lavender Hill, SW11**  
**£514,500**

**Dexters**



## Lavender Hill, SW11

An impressive, split level Victorian conversion measuring over 800 Sq Ft. Comprising a large open plan reception/kitchen, two bedrooms, two bathrooms (inc en-suite) and private outside space (roof terrace). The property benefits further from being sold chain free.

Arranged over the upper floors of an attractive period building, this bright and well-presented apartment offers generous and versatile living space. The second floor features a spacious kitchen/reception room with sash windows flooding the room with natural light, alongside a bedroom with a door opening onto a private balcony and a family bathroom completes this floor. Upstairs, the principal bedroom occupies the entire top floor, providing an impressive and private retreat complete with fitted storage and an en suite shower room.

Lavender Hill is conveniently located for Clapham Junction overground, the green spaces of Clapham Common as well as many shops, restaurants, gyms and bars on Lavender Hill itself, Northcote Road & Battersea Rise which is also nearby.

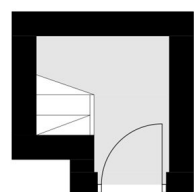
### Features

- Open Plan Reception/Kitchen
- Two Bedrooms
- Two Bathrooms
- Measuring Over 800 Sq Ft
- Superb Location
- Chain Free

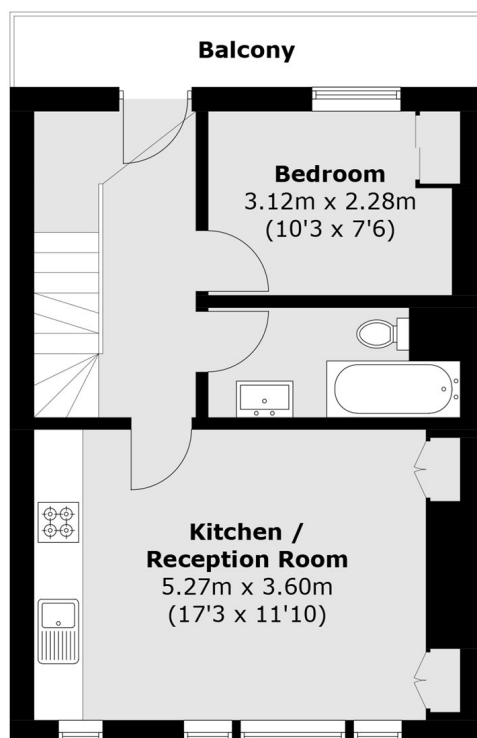




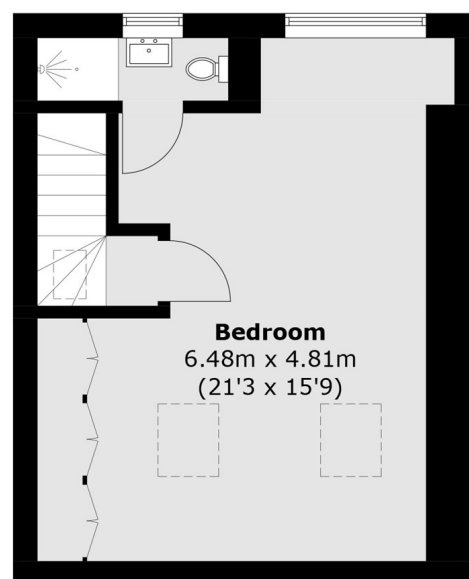
# Lavender Hill, London, SW11



**First Floor**



**Second Floor**



**Third Floor**

Total area (approx.): 75.9 sq. m (816.8 sq. ft)  
Balcony area : 5.1 sq. m (54.8 sq. ft)