



Ingelow Road, SW8
£637,000

Dexters



Ingelow Road, SW8

A spacious ground floor maisonette presented in excellent order throughout. Arranged to include a reception room, modern kitchen, private garden, two double bedrooms and a spacious bathroom. The property benefits from its own front door & has extension potential (STPP).

The apartment is entered via its own front door, opening into a bright reception room with bay window and high ceilings. A double bedroom sits just beyond with bespoke built in storage, followed by a well-arranged kitchen with space for dining and access to the private garden. A second bedroom also with built in storage and modern bathroom are positioned to the rear, completing this well-balanced home.

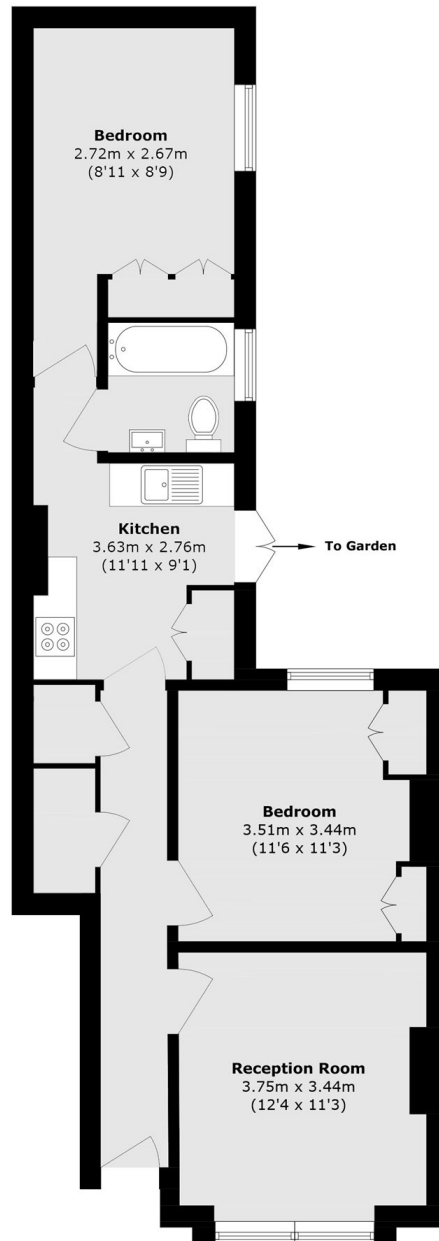
Ingelow Road is located on a quiet residential road within the popular 'Diamond Conservation' area, the flat is within easy reach of the amenities of Queenstown Road and local transport links including the Northern Line extension. The iconic Battersea Power Station & Battersea Park are a short stroll away.

Features

- Two Double Bedrooms
- Large Reception Room
- Own Front Door
- Private Garden
- Modern Kitchen
- Superb Location



Ingelow Road, London, SW8



Total area (approx.): 59.1 sq. m (636.1 sq. ft)

Dexters

Northcote Road
93 St. John's Road
London
SW11 1QY
Sales
020 7483 6333

Energy Rating: D. We aim to make our particulars both accurate and reliable. However they are not guaranteed; nor do they form part of an offer or contract. If you require clarification on any points then please contact us, especially if you're traveling some distance to view. Please note that appliances and heating systems have not been tested and therefore no warranties can be given as to their good working order.

 **RICS** | Regulated
Estate Agent
and Letting Agent

[dexters.co.uk](https://www.dexters.co.uk)