



Northcote Road, SW11
£550,000

Dexters



Northcote Road, SW11

A beautifully presented period conversion, ideally positioned on the ever-popular Northcote Road between the commons'. The property features a bright open-plan reception and kitchen with high ceilings and excellent natural light, a well-proportioned double bedroom, a modern bathroom, and a private roof terrace.

Entering the flat, you're welcomed into a bright open-plan kitchen and reception room, featuring large sash windows that flood the space with natural light. A hallway leads through to a modern bathroom and a spacious double bedroom with direct access to a private roof terrace, perfect for relaxing or entertaining outdoors.

Northcote Road sits perfectly between Clapham Common and Wandsworth Common, and is one of the most sought-after addresses between the commons. The area offers an exceptional lifestyle with Clapham Junction, a vibrant mix of cafés, boutiques, bars and restaurants, and a selection of highly regarded schools all within easy reach.

Features

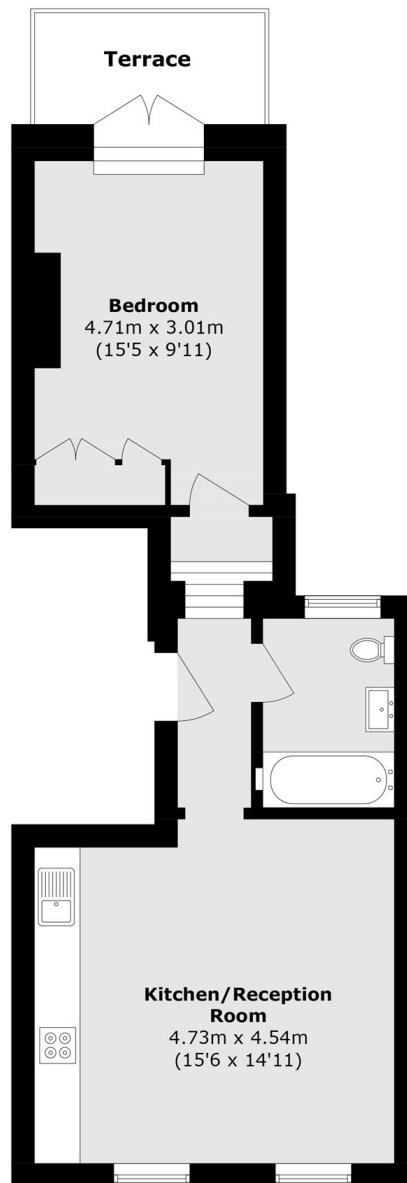
- Period Conversion
- Fully Refurbished
- Open Plan Reception/Kitchen
- Double Bedroom
- Private Roof Terrace
- Between The Commons







Northcote Road,
London, SW11



Total area (approx.): 44.2 sq. m (475.7 sq. ft)
Terrace area (approx.): 4.4 sq. m (47.3 sq. ft)

Dexters

Northcote Road
93 St. John's Road
London
SW11 1QY
Sales
020 7483 6333

Energy Rating: C. We aim to make our particulars both accurate and reliable. However they are not guaranteed; nor do they form part of an offer or contract. If you require clarification on any points then please contact us, especially if you're traveling some distance to view. Please note that appliances and heating systems have not been tested and therefore no warranties can be given as to their good working order.

 **RICS** | Regulated
Estate Agent
and Letting Agent

[dexters.co.uk](https://www.dexters.co.uk)