



Bolingbroke Grove, SW11

£525,000

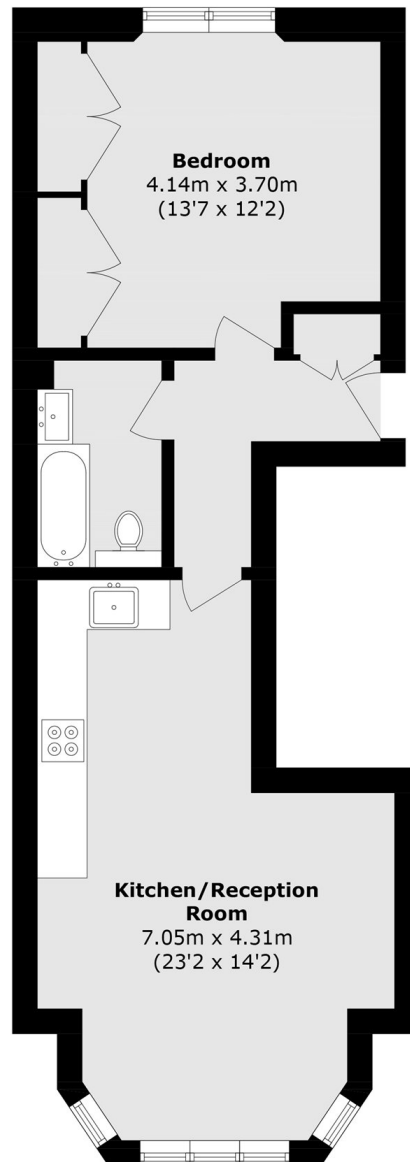
A stylish, contemporary Victorian conversion just off the highly sought-after Wandsworth Common, perfectly blending modern comfort with period charm. The apartment features a bright, open-plan reception, kitchen, and dining area with views over Wandsworth Common, along with a spacious double bedroom and a family bathroom.

Bolingbroke Grove is located between Clapham Common and Wandsworth Common and is one of the more sought-after streets between the commons. Wandsworth Common Station, an array of shops, bars and restaurants along Bellvue Road as well as a selection of great schools are all nearby.

Features

- Victorian Conversion
- One Double Bedroom
- Open Plan Reception/Kitchen
- Chain Free
- Superb Location

Bolingbroke Grove, London, SW11



Total area (approx.): 47.3 sq. m (509.1 sq. ft)