



## Mossbury Road, SW11

£475,000

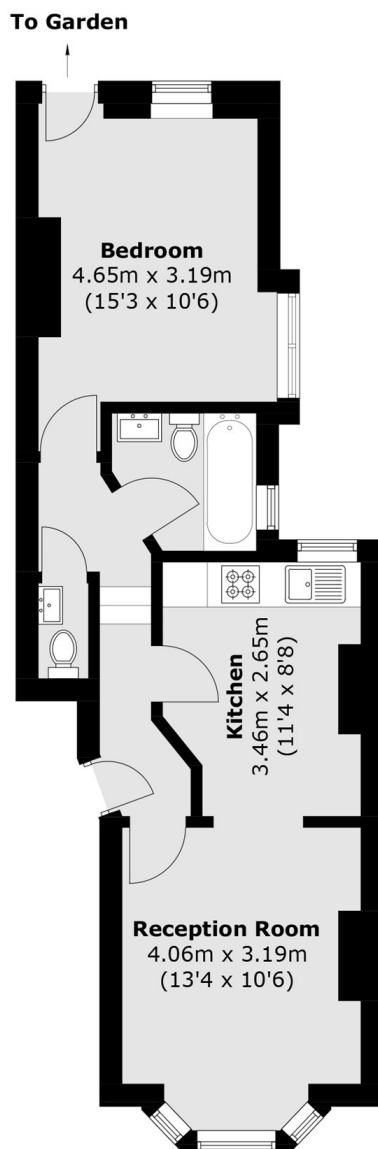
A one double bedroom ground floor garden flat set in a beautiful Victorian building situated on the sought after Mossbury Road. The apartment comprises of a double bedroom, reception room with high ceilings, modern kitchen, family bathroom & private garden. The property benefits further from being sold chain.

Mossbury Road is a sought after street located moments from the green open spaces of Wandsworth Common and close to the eclectic mix of bars, restaurants and boutiques on St. John's Hill & Northcote Road. Clapham Junction Station is literally around the corner.

### Features

Period Conversion  
Modern Kitchen  
Private Garden  
Superb Location  
Chain Free

Mossbury Road,  
London, SW11



Total area (approx.): 44.0 sq. m (473.6 sq. ft)

**Dexters**

Northcote Road  
93 St. John's Road  
London  
SW11 1QY  
Sales  
020 7483 6333

Energy Rating: D. We aim to make our particulars both accurate and reliable. However they are not guaranteed; nor do they form part of an offer or contract. If you require clarification on any points then please contact us, especially if you're traveling some distance to view. Please note that appliances and heating systems have not been tested and therefore no warranties can be given as to their good working order.

 **RICS** | Regulated  
Estate Agent  
and Letting Agent

[dexters.co.uk](https://www.dexters.co.uk)