



Almeric Road, SW11
£900,000

Dexters



Almeric Road, SW11

An exceptional Victorian conversion measuring over 1,000 sq ft located 'between the commons'. Comprising a large open plan reception/kitchen & dining area, three double bedrooms, two bathrooms (inc en-suite) and a private garden. The property also benefits from a share of freehold, has plenty of storage space including the cellar and is being sold chain free.

A welcoming hallway with bespoke built-in storage leads through this beautifully arranged home. At the front, the principal bedroom enjoys a bright bay window, while the second double bedroom features a stylish en-suite. A contemporary family bathroom sits off the hall before the property opens into a spacious kitchen and reception room, perfect for entertaining and everyday living. Bifold doors open onto the private garden, creating a seamless indoor-outdoor flow ideal for al-fresco dining and summer relaxation. To the rear, a third bedroom also opens onto the garden, offering a peaceful retreat or flexible study space. A large cellar below provides excellent additional storage.

Almeric Road is located between Clapham Common and Wandsworth Common and is one of the more sought-after streets between the commons. Clapham Junction, an array of shops, bars and restaurants as well as a selection of great schools are all nearby.

Features

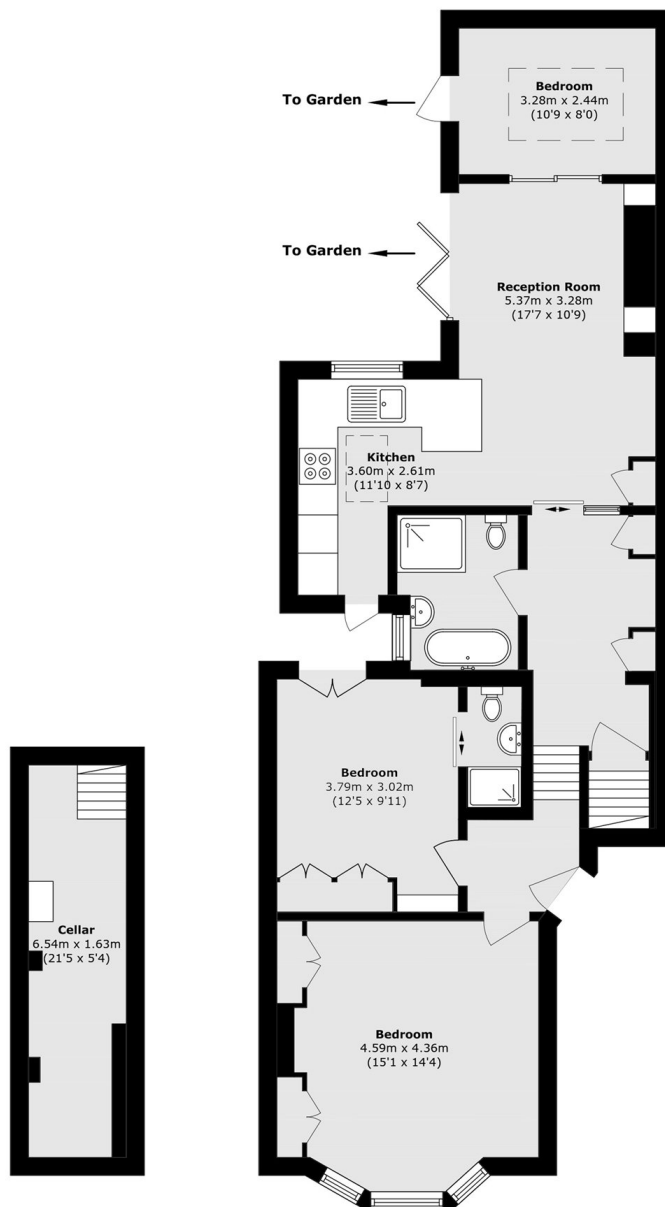
- Between The Commons
- Three Double Bedrooms
- Two Bathrooms
- Private Garden
- Share Of Freehold
- Chain Free







Almeric Road, London, SW11



Basement

Ground Floor

Total area (approx.): 98.5 sq. m (1060.2 sq. ft)
(Including Basement)

Dexters

Northcote Road
93 St. John's Road
London
SW11 1QY
Sales
020 7483 6333

Energy Rating: D. We aim to make our particulars both accurate and reliable. However they are not guaranteed; nor do they form part of an offer or contract. If you require clarification on any points then please contact us, especially if you're traveling some distance to view. Please note that appliances and heating systems have not been tested and therefore no warranties can be given as to their good working order.

 **RICS** | Regulated
Estate Agent
and Letting Agent

[dexters.co.uk](https://www.dexters.co.uk)