



**Battersea Park Road, SW11**  
**£650,000**

**Dexters**



## Battersea Park Road, SW11

An impressive apartment measuring circa 800 Sq Ft located on the popular Battersea Park Road. Comprising of a large reception/dining room, separate kitchen, two double bedrooms, two bathrooms (inc en-suite) & large private roof terrace. The property benefits further from being sold chain free.

You enter into a central hallway that leads through to a spacious reception room, where double doors open directly onto the private balcony, creating a bright and sociable living space. Just off the reception is a separate kitchen, well positioned for everyday living and entertaining. The accommodation includes two well-proportioned bedrooms, both set away from the main living area, along with a family bathroom and a separate WC, providing a practical and well-balanced layout.

Battersea Park Road is a sought after road near Battersea Park and the iconic Battersea Power Station. Located conveniently for easy access into the Kings Road in Chelsea and the busy Sloane Square. Clapham Junction railway station is also a short walk away.

### Features

- Two Double Bedrooms
- Two Bathrooms
- Large Reception Room
- Separate Kitchen
- Private Roof Terrace
- Chain Free







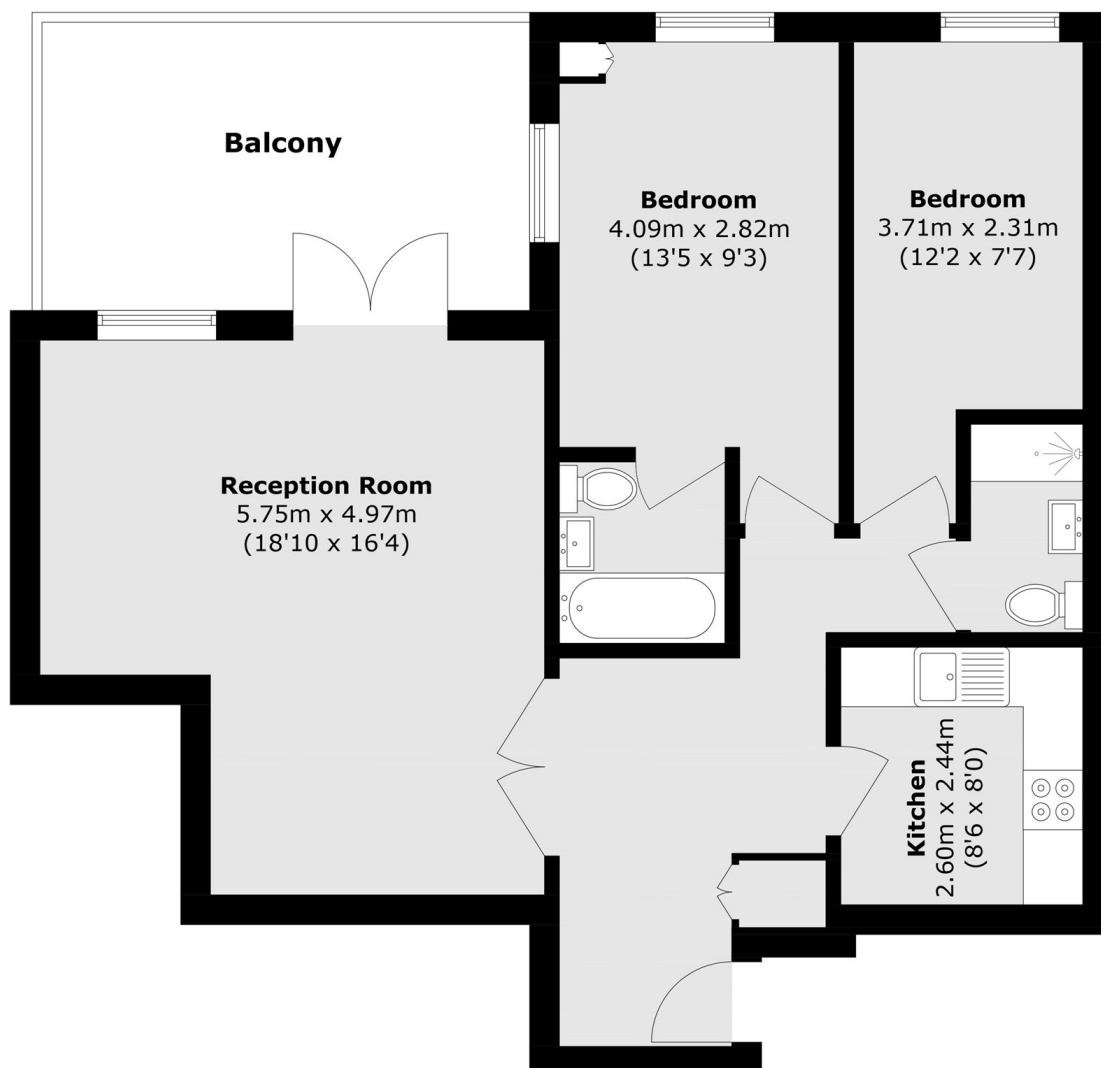








# Battersea Park Road, London, SW11



Total area (approx.): 74.2 sq. m (798.6 sq. ft)  
Balcony area (approx.): 14.8 sq. m (159.3 sq. ft)

## Dexters

Northcote Road  
93 St. John's Road  
London  
SW11 1QY  
Sales  
020 7483 6333

Energy Rating: B. We aim to make our particulars both accurate and reliable. However they are not guaranteed; nor do they form part of an offer or contract. If you require clarification on any points then please contact us, especially if you're traveling some distance to view. Please note that appliances and heating systems have not been tested and therefore no warranties can be given as to their good working order.

 **RICS** | Regulated  
Estate Agent  
and Letting Agent

[dexters.co.uk](https://www.dexters.co.uk)