



Wandsworth Road, SW8

£750,000

Dexters



Wandsworth Road, SW8

An exceptional, refurbished, Victorian maisonette presented in immaculate order throughout measuring over 814 Sq Ft. Comprising an open plan reception/kitchen/dining room, two double bedrooms, family bathroom and private roof terrace. The property benefits further from a private entrance & currently has the full freehold.

The living area begins with a private entrance leading through to a central hallway off which we find a generous living room that leads through to a beautiful bespoke kitchen with a large Corian island and worktops, integrated Neff appliances and plenty of integrated storage space. Walnut wood flooring and hot water underfloor heating is fitted throughout the open plan living area. The generous terrace is located to the rear of the property and is ideal for entertaining and everyday living.

Upstairs the property features two large double bedrooms, modern wet bathroom with Italian fittings and further underfloor heating. High ceilings and large bay windows give a wonderful sense of light and space, enhancing the airy, open feel throughout this home.

Ideally located for the amenities of Clapham Old Town and within easy walking distance of both Clapham Common and Battersea Park.

Features

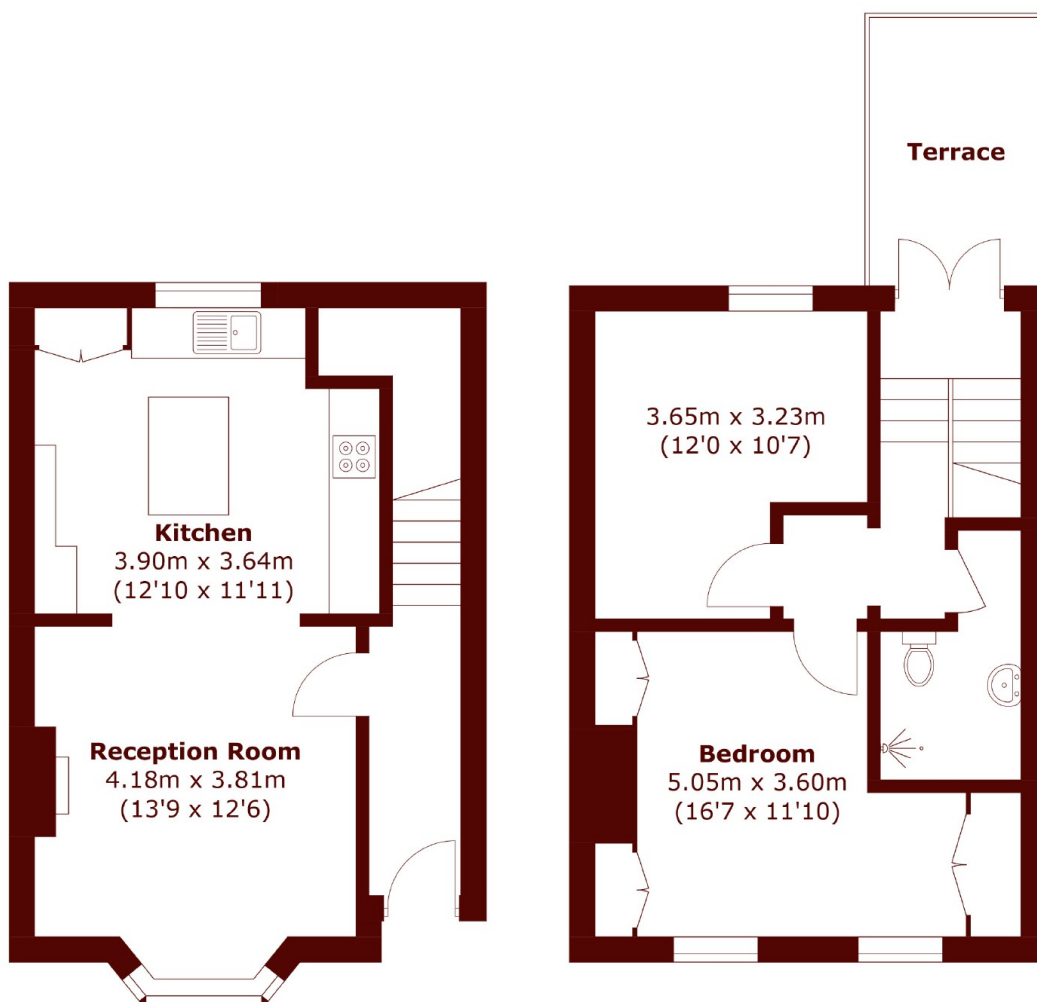
- Open Plan Reception/Kitchen
- Owns The Full Freehold
- Two Double Bedrooms
- Modern Bathroom
- Private Roof Terrace
- Own Front Door







Wandsworth Road, London, SW8



Ground Floor

First Floor

Total area (approx.): 75.7 sq. m (814.8 sq. ft)

Terrace: 6.5 sq. m (70.0 sq. ft)