



Hyde Lane, SW11

£650,000

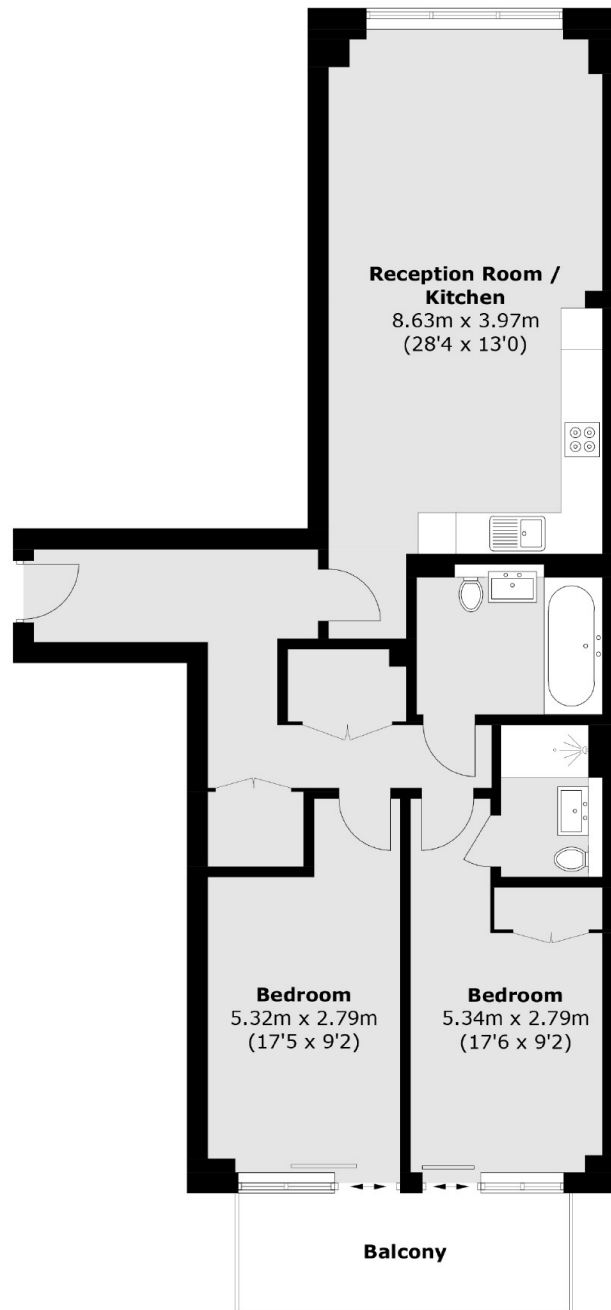
A beautifully presented bright and spacious, modern two double bedroom purpose built apartment, spanning over 918 sq ft. It has an open plan reception/kitchen with integrated appliances, two double bedrooms and two modern bathrooms (Inc en-suite). The property further benefits from a private balcony, is moments from Battersea Park and is being sold chain free.

Hyde Lane is located close to the the river and opposite Battersea Park, Sloane Square, and Battersea Power Station. Queenstown Road and Battersea Park national rail stations are a short walk away, as is Sloane Square underground station.

Features

- Two Double Bedrooms
- Measuring Over 918 Sq Ft
- Two Modern Bathrooms
- Private Balcony
- Superb Location
- Chain Free

Hyde Lane,
London, SW11



Total area (approx.): 85.3 sq. m (918.2 sq. ft)
Balcony: 8.2 sq. m (30.1 sq. ft)

Dexters

Northcote Road
93 St. John's Road
London
SW11 1QY
Sales
020 7483 6333

Energy Rating: C. We aim to make our particulars both accurate and reliable. However they are not guaranteed; nor do they form part of an offer or contract. If you require clarification on any points then please contact us, especially if you're traveling some distance to view. Please note that appliances and heating systems have not been tested and therefore no warranties can be given as to their good working order.

 **RICS** | Regulated
Estate Agent
and Letting Agent

[dexters.co.uk](https://www.dexters.co.uk)