



Hyde Lane, SW11

£625,000

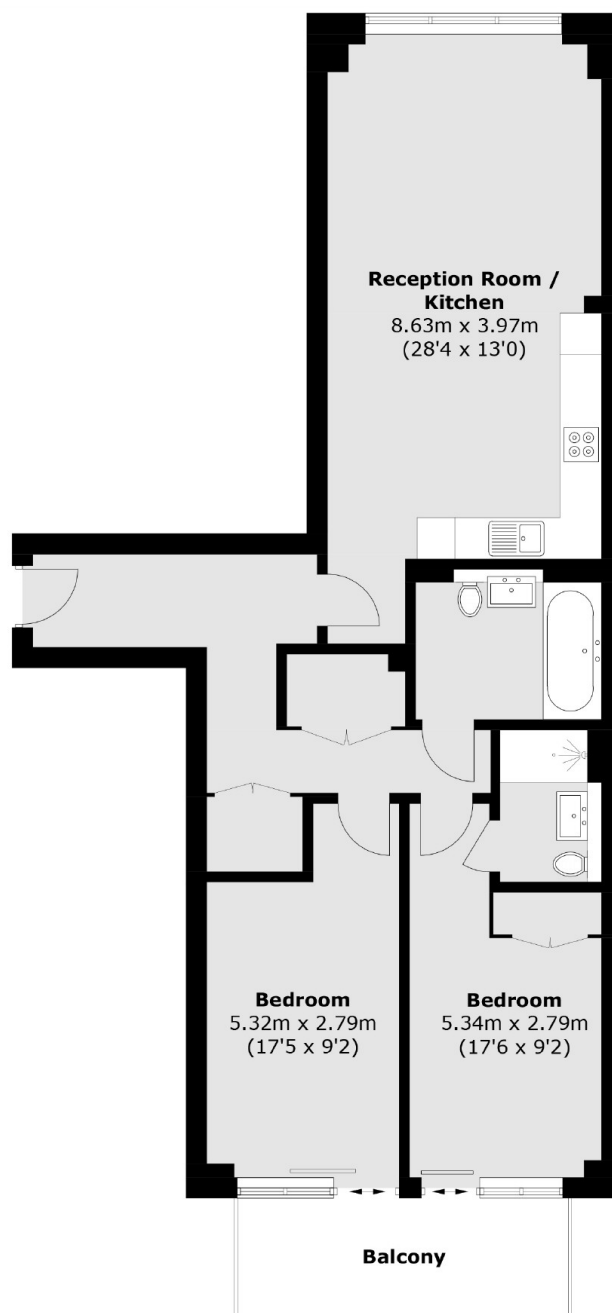
A beautifully presented bright and spacious, modern two double bedroom purpose built apartment, spanning over 918 sq ft. It has an open plan reception/kitchen with integrated appliances, two double bedrooms and two modern bathrooms (Inc en-suite). The property further benefits from a private outside space (balcony), is moments from Battersea Park and is being sold chain free.

Hyde Lane is located close to the the river and opposite Battersea Park, Sloane Square, and Battersea Power Station. Queenstown Road and Battersea Park national rail stations are a short walk away, as is Sloane Square underground station.

Features

- Two Double Bedrooms
- Measuring Over 918 Sq Ft
- Two Modern Bathrooms
- Private Balcony
- Superb Location
- Chain Free

Hyde Lane,
London, SW11



Total area (approx.): 85.3 sq. m (918.2 sq. ft)
Balcony: 8.2 sq. m (30.1 sq. ft)