



Sisters Avenue, SW11
£900,000

Dexters



Sisters Avenue, SW11

A stunning, two double bedroom Victorian conversion on the sought after Sisters Avenue. This beautifully presented home offers generous living space and period charm throughout. The accommodation comprises a spacious reception room, two well-proportioned double bedrooms, a modern eat-in kitchen, family bathroom, utility room and a private garden with side access. Further benefits include extension potential into the side return/rear (STPP), additional storage in the garden including bike storage and the property is offered to the market chain free.

You enter into a bright reception room at the front of the property, leading through to a spacious kitchen and dining room with doors out to the garden. To the rear are two well-proportioned bedrooms and a family bathroom. A basement utility room provides practical additional space for storage and laundry.

Sisters Avenue is perfectly positioned just moments from the open spaces of Clapham Common and the vibrant array of shops, cafés, gyms, and restaurants on Lavender Hill. The trendy Northcote Road and Clapham Junction station are also within easy walking distance.

Features

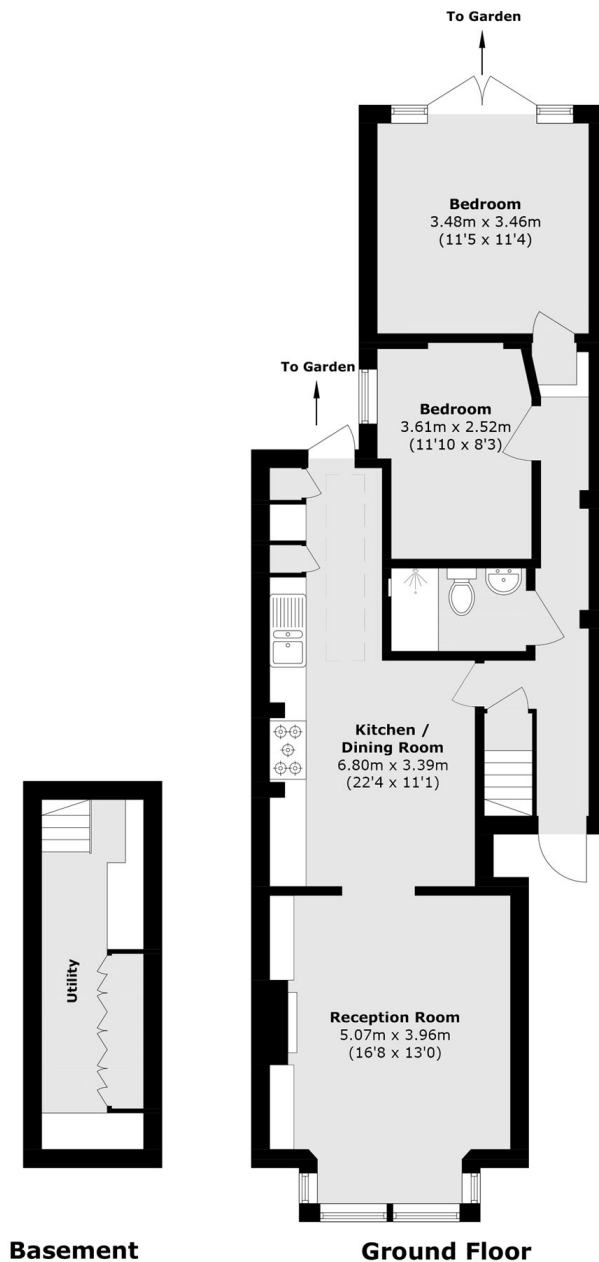
- Victorian Conversion
- Two Double Bedrooms
- Private Garden
- Extension Potential
- Side Access
- Chain Free







Sisters Avenue, London, SW11



Total area (approx.): 82.6 sq. m (889.1 sq. ft)
(Including Basement)

Dexters

Northcote Road
93 St. John's Road
London
SW11 1QY
Sales
020 7483 6333

Energy Rating: D. We aim to make our particulars both accurate and reliable. However they are not guaranteed; nor do they form part of an offer or contract. If you require clarification on any points then please contact us, especially if you're traveling some distance to view. Please note that appliances and heating systems have not been tested and therefore no warranties can be given as to their good working order.

 **RICS** | Regulated
Estate Agent
and Letting Agent

[dexters.co.uk](https://www.dexters.co.uk)