



## Prairie Street, SW8

### £650,000

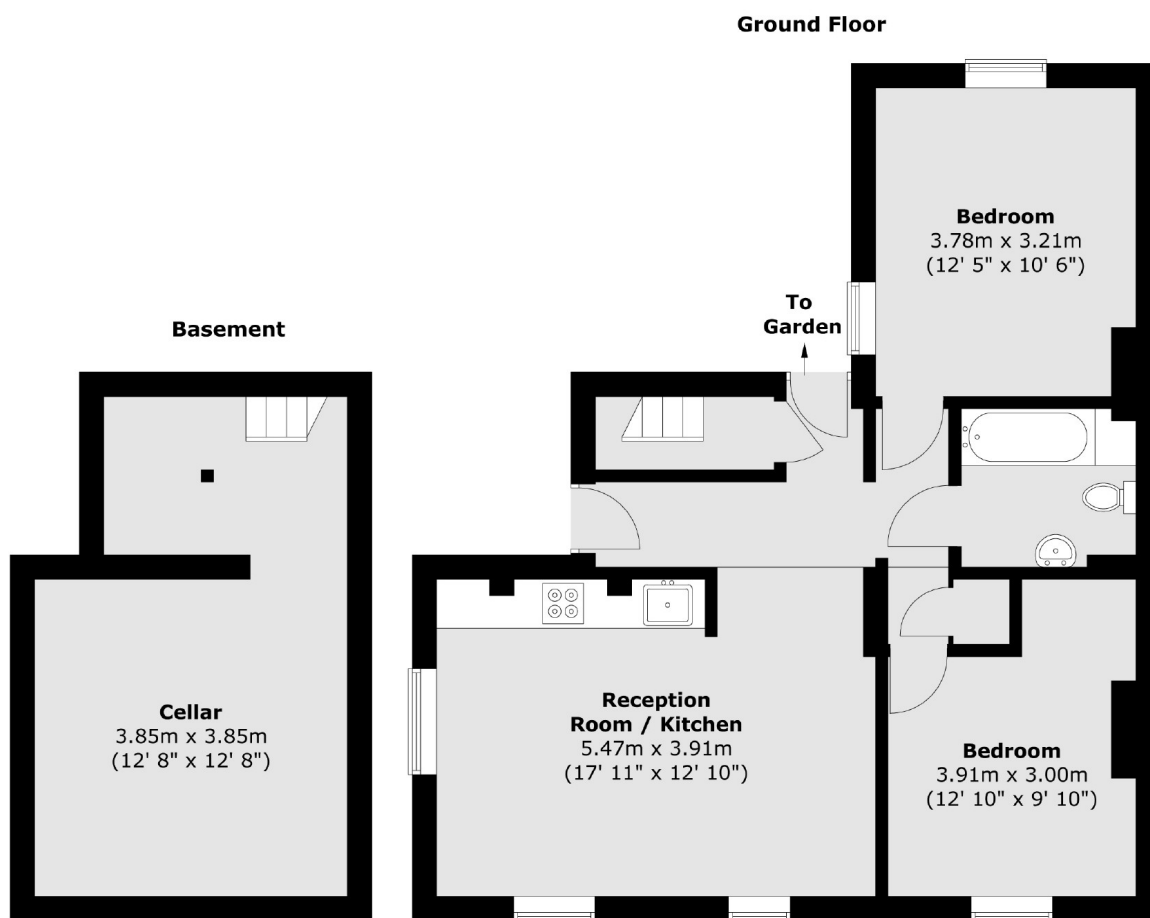
An immaculate and well proportioned two double bedroom ground floor maisonette measuring 890 Sq Ft. The property has a low maintenance private garden and benefits from being end of terrace with side access.

Located on a quiet residential street within the popular 'Diamond Conservation' area, the flat is within easy reach of the amenities of Queenstown Road, Battersea Power Station and local transport links.

### Features

- Ground Floor Maisonette
- Two Large Double Bedrooms
- Private Garden
- Huge Amounts Of Storage
- Own Front Door
- End Of Terrace

# Prairie Street, London, SW8



Total area (approx.) : 82.7 sq. m (890 sq. ft)

## Dexters

Northcote Road  
93 St. John's Road  
London  
SW11 1QY  
Sales  
020 7483 6333

Energy Rating: C. We aim to make our particulars both accurate and reliable. However they are not guaranteed; nor do they form part of an offer or contract. If you require clarification on any points then please contact us, especially if you're traveling some distance to view. Please note that appliances and heating systems have not been tested and therefore no warranties can be given as to their good working order.

 **RICS** | Regulated  
Estate Agent  
and Letting Agent

[dexters.co.uk](http://dexters.co.uk)