



Stanley Grove, SW8

£600,000

Dexters



Stanley Grove, SW8

A beautiful ground floor maisonette presented in excellent order throughout located on the sought after Stanley Grove. Arranged to include a stunning, open plan reception/kitchen/dining room, private garden, two bedrooms, a versatile garden room currently being used as an office and a modern bathroom. The property benefits from its own front door, has a share of freehold & has side access.

You enter into a hallway leading through to the open-plan reception and kitchen, which forms the hub of the home and opens directly onto the garden, making it ideal for everyday living and entertaining. Two bedrooms and the bathroom are set off the hallway, while the garden room provides useful additional space and offers direct side access out to the street.

Stanley Grove is located on a quiet residential road within the popular 'Diamond Conservation' area, the flat is within easy reach of the amenities of Queenstown Road and local transport links including the Northern Line extension. The iconic Battersea Power Station & Battersea Park are a short stroll away.

Features

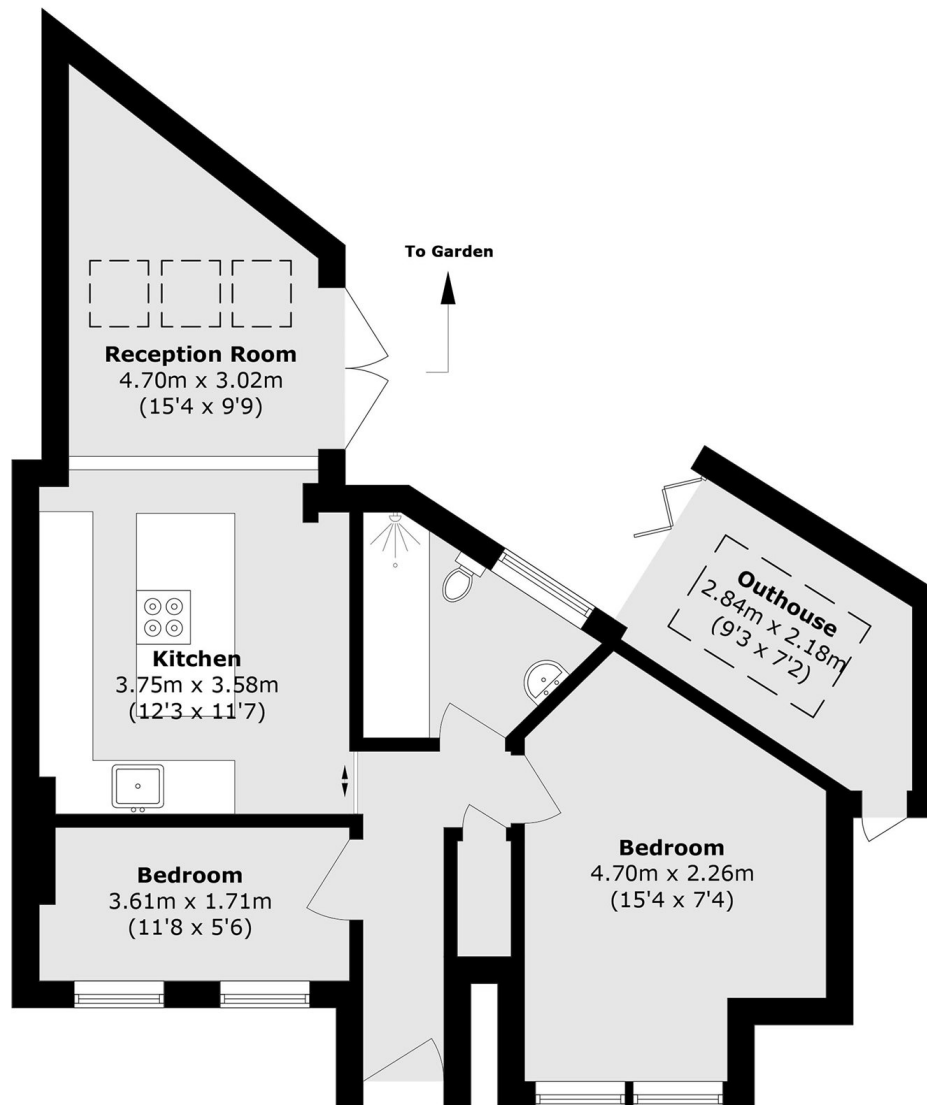
- Open Plan Reception/Kitchen
- Two Bedrooms
- Own Front Door
- Private Garden
- Share Of The Freehold
- Garden Room







Stanley Grove, London, SW8



Total area (approx.): 56 sq. m (603 sq. ft)
Outbuilding area (approx.): 6.2 sq. m (66.7 sq. ft)