



Oberstein Road, SW11
£375,000

Dexters



Oberstein Road, SW11

A one double bedroom, Victorian conversion on the highly sought after Oberstein Road, offering the perfect blend of modern comfort and period charm. The apartment boasts a reception room, kitchen, double bedroom, family bathroom and garden (communal) with direct access. The property benefits further from its own private entrance and is being sold chain free.

You enter into a hallway that leads through to a generous reception and dining room at the front of the property, providing a comfortable living and entertaining space. Off the hallway sits the bedroom and bathroom, well positioned for privacy. To the rear, the separate kitchen opens directly out to the garden, creating a natural flow for everyday living and indoor-outdoor entertaining.

Oberstein Road is located moments from Clapham Junction overground and the many shops, restaurants & gyms on both St John's Hill & St. John's Road. The vibrant Northcote Road is also nearby. The green spaces of Clapham Common and Wandsworth Common are a short walk away.

Features

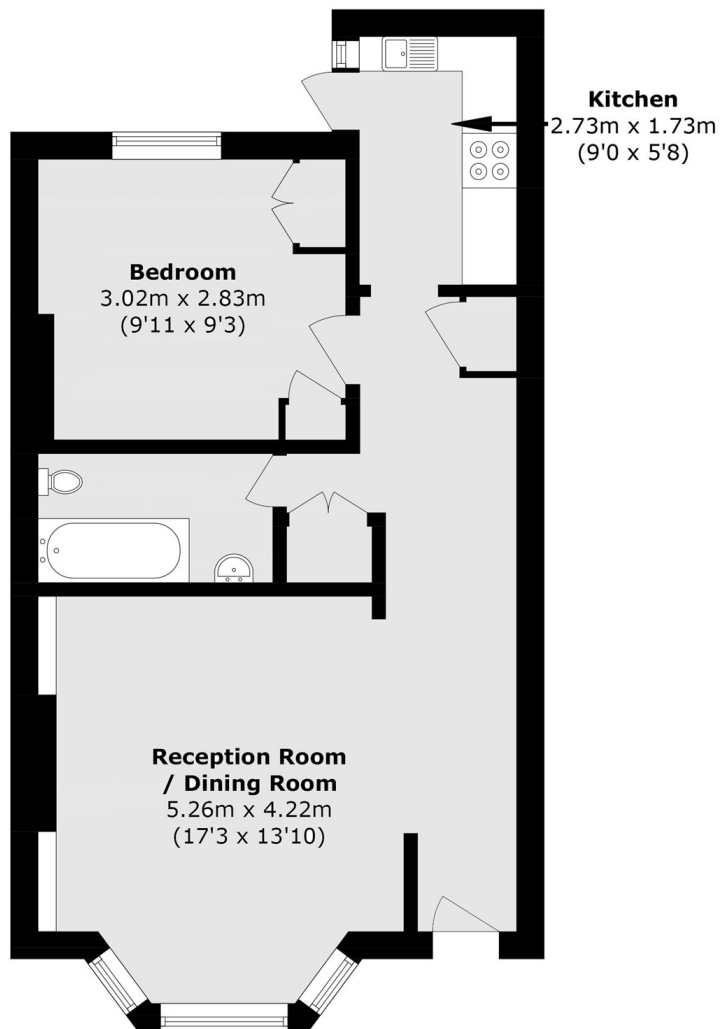
- Victorian Conversion
- One Double Bedroom
- Private Entrance
- Large Communal Garden
- Family Bathroom
- Chain Free







Oberstein Road, London, SW11



Total area (approx.): 48.7 sq. m (524.2 sq. ft)