



Grandison Road, SW11

£1,250,000

Dexters



Grandison Road, SW11

A beautifully proportioned three/four double bedroom Victorian home of approximately 1,400 sq ft and enviably positioned on the highly sought-after Grandison Road, Between the Commons. The property offers a reception room, an eat in kitchen, family bathroom, west-facing garden and a private terrace. There is clear potential to extend (STPP). Offered to the market chain free.

Entering on the ground floor, you are welcomed into a bay-fronted reception room at the front of the house, a comfortable space for relaxing or entertaining. To the rear sits a well-proportioned double bedroom, while the heart of the home is the kitchen/dining room at the back, offering excellent everyday living space with direct access out to the garden. Upstairs, the first floor provides three further bedrooms, including a generous principal bedroom to the front and two additional well-sized rooms, served by a family bathroom.

Grandison Road is located between Clapham Common and Wandsworth Common and is one of the more sought-after streets between the commons. Clapham Junction station & Clapham Common station are a short stroll away. Northcote Road with its array of shops, bars and restaurants as well as a selection of great schools are all nearby.

Features

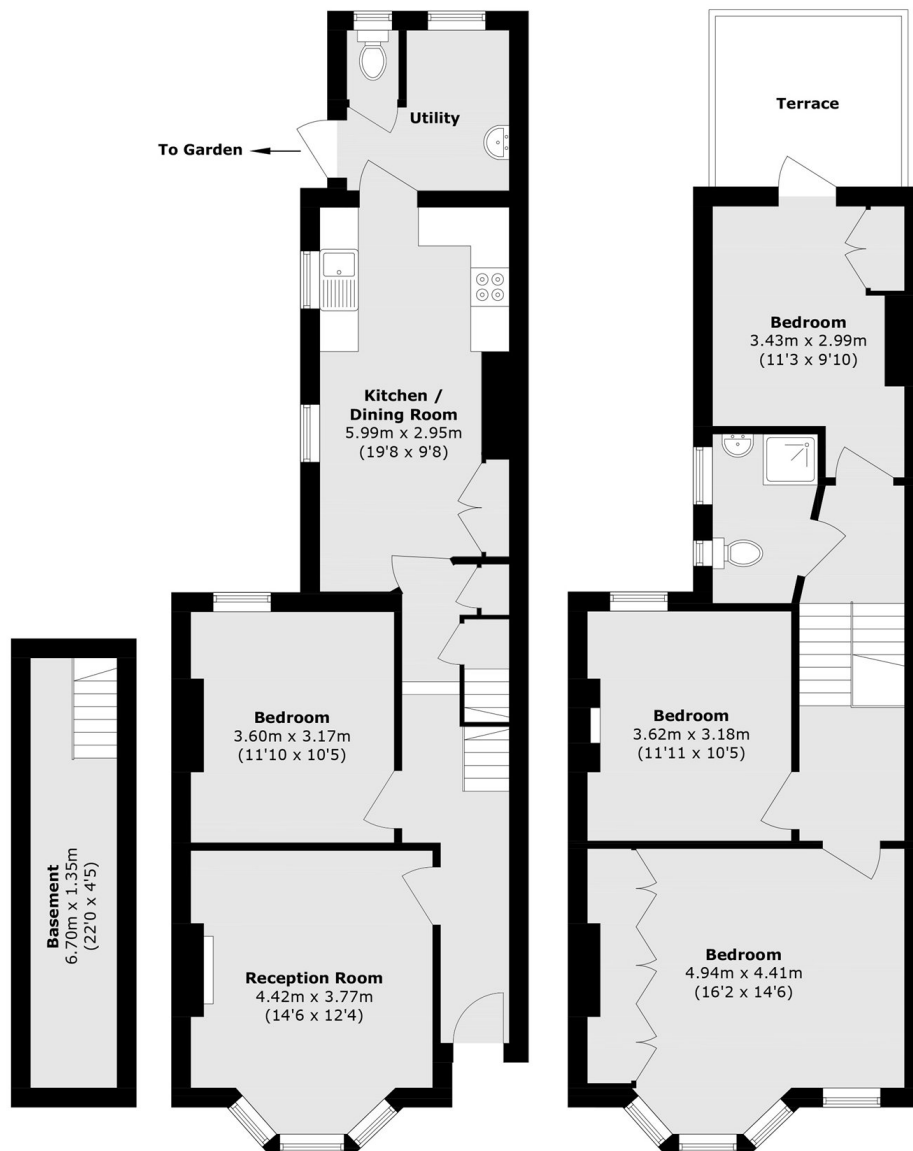
- Between The Commons
- Reception Room
- Three/Four Bedrooms
- West Facing Garden/Terrace
- Extension Potential (STPP)
- Chain Free







Grandison Road, London, SW11



Basement

Ground Floor

First Floor

Total area (approx.): 128.7 sq. m (1385.3 sq. ft)
(Including Basement)
Terrace area (approx.): 7.7 sq. m (82.8 sq. ft)