



Juniper Drive, SW18  
£500,000

**Dexters**



## Juniper Drive, SW18

An impressive two double bedroom lateral apartment situated in the sought after Spinnaker House within the Battersea Reach development. Comprising an open plan reception room/kitchen & dining area, two bathrooms and private outside space (balcony) with incredible views. The property benefits further from a 24 hour concierge, on site gym, underground parking and is being offered chain free.

You enter into a central hallway which leads through to the impressive reception room at the rear of the apartment. This generous living space comfortably accommodates both seating and dining areas and opens directly onto a private balcony, creating a seamless indoor-outdoor feel. The separate kitchen sits just off the reception room, well laid out and practical for everyday living. There are two well-proportioned double bedrooms, both set away from the main living area for privacy. The principal bedroom benefits from its own en-suite bathroom, while a separate family bathroom serves the second bedroom and guests, completing a well-balanced and functional layout.

The Battersea Reach development offers high end riverside accommodation and is conveniently located for access North of the River and into Central London. Wandsworth Town station and Clapham Junction are nearby.

### Features

- Open Plan Reception Room
- Two Double Bedrooms
- Private Balcony
- Two Bathrooms
- Off Street Parking
- Chain Free

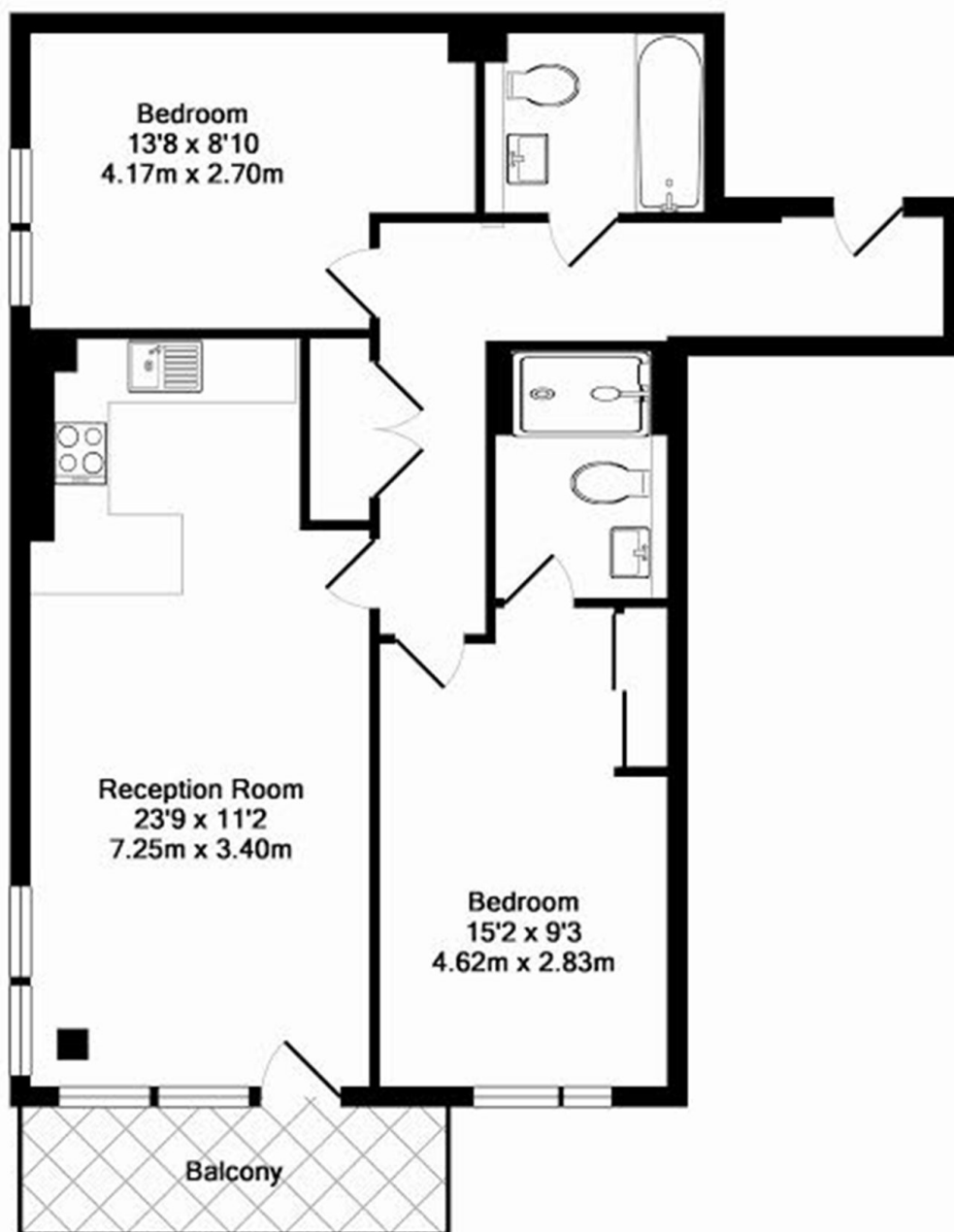








# Juniper Drive, London, SW18



Spinnaker House, Juniper Drive , SW18  
Total Approx. Floor Area 728 Sq.Ft. (67.6 Sq.M.)

## Dexters

Northcote Road  
93 St. John's Road  
London  
SW11 1QY  
Sales  
020 7483 6333

Energy Rating: B. We aim to make our particulars both accurate and reliable. However they are not guaranteed; nor do they form part of an offer or contract. If you require clarification on any points then please contact us, especially if you're traveling some distance to view. Please note that appliances and heating systems have not been tested and therefore no warranties can be given as to their good working order.

 **RICS** | Regulated  
Estate Agent  
and Letting Agent

[dexters.co.uk](https://www.dexters.co.uk)