



York Place, SW11

£500,000

Dexters



York Place, SW11

An impressive one double bedroom lateral apartment situated within the sought-after Coda development with stunning wraparound views of the London skyline. Comprising an open plan reception room, modern kitchen & dining area, family bathroom and private outside space (balcony). The property further benefits from Impressive double-height entrance lobby with visitor seating area, dedicated 24-hour concierge service, private residents' lounge and co-working spaces, has a fully equipped gym with modern equipment including Peloton bikes. Further benefits include beautifully landscaped residents' gardens at podium level, Cycle parking & allocated, secure underground parking. The flat is circa 55 sq m / 590 sq ft & has an 8 sq m / 85 sq ft balcony.

You enter into a spacious open-plan kitchen and reception room, ideal for living and dining, with direct access onto a private balcony. The double bedroom is well proportioned and set away from the main living area, with a modern bathroom positioned off the hallway.

Coda Residences is situated just off the banks of the River Thames, a short walk to Battersea Village & Chelsea Harbour. Clapham Junction is located close by where there is an abundance of shops, restaurants, cafes and bars and great transport links.

Features

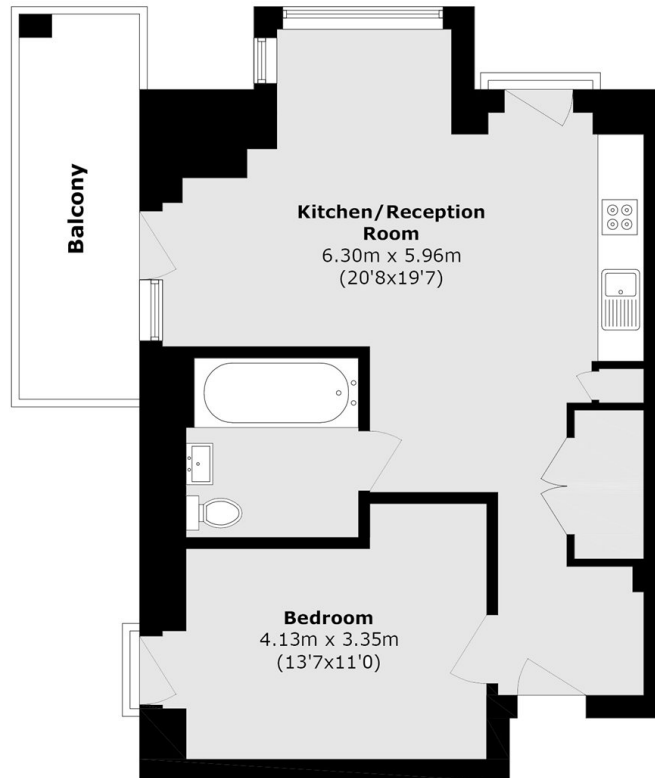
- One Double Bedroom
- Allocated Parking
- Gym & 24 Hr Concierge
- Communal Gardens
- Cycle Storage
- Private Balcony







York Place, London, SW11



Total area (approx.): 54.3 sq. m (584.5 sq. ft)

Balcony area (approx.): 7.79 sq. m (84 sq. ft)