

Prince Of Wales Drive, SW11

£475,000

Dexters



Prince Of Wales Drive, SW11

A beautiful one double bedroom apartment in a prestigious mansion block on the sought after Prince Of Wales Drive, located opposite Battersea Park & around the corner from the iconic Battersea Power Station. The property comprises a reception room, separate kitchen, double bedroom & a bathroom. The property benefits further from a share of the freehold and is being offered chain free.

Entering the property, a hallway leads through to a well-proportioned reception room which provides a comfortable living and dining space. The separate kitchen sits just beyond, offering a practical layout. The property further benefits from a generous double bedroom and a bathroom, completing this well-balanced home.

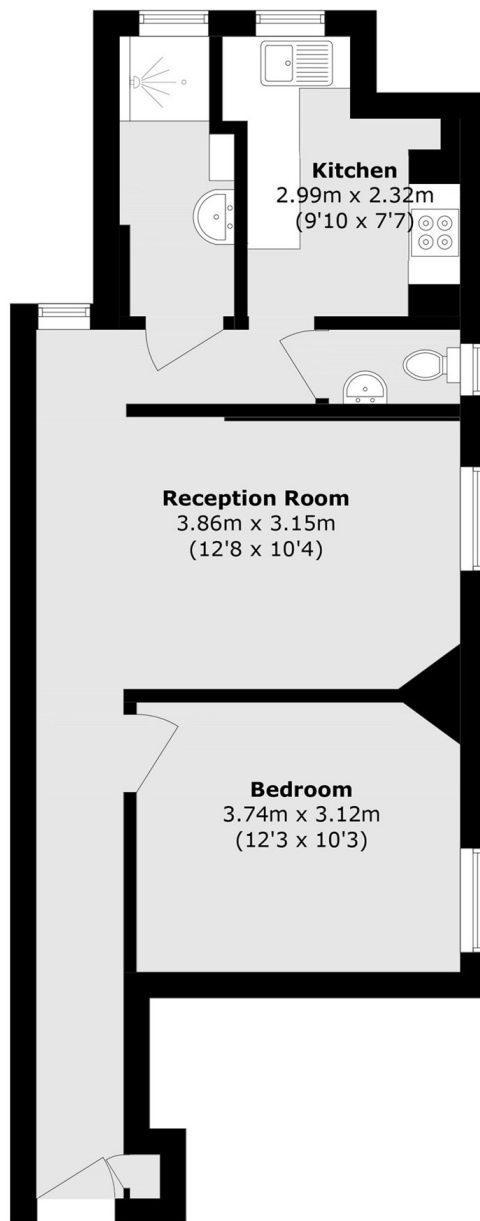
Prince Of Wales Drive offers excellent transport links to the rest of London. The nearby overground provides access into Waterloo & Victoria with the nearby tube (Northern Line) getting you into the City & Central London. Also nearby are a number of bus routes to Kensington High Street, Marble Arch, Sloane Sq & Knightsbridge.

Features

- One Double Bedroom
- Family Bathroom
- Opposite Battersea Park
- Reception Room
- Share Of The Freehold
- Chain Free



Prince Of Wales Drive, London, SW11



Total area (approx.): 51.4 sq. m (553.2 sq. ft)