



Vicarage Crescent, SW11

£575,000

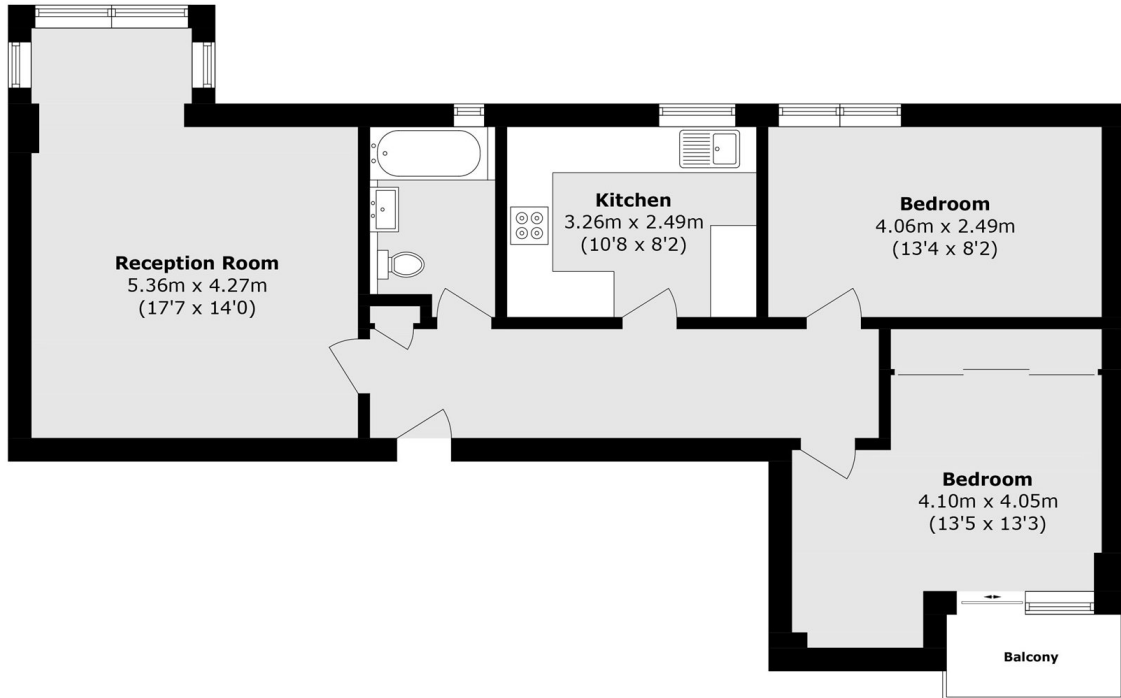
Beautifully laid out, this two bedroom apartment offers a large reception room, separate kitchen and modern family bathroom. With a personal balcony view overlooking the London Thames and a communal garden. The property also offers allocated parking within the development.

Battersea Square is half a mile from the river and Chelsea, with the shops and restaurants including Gordon Ramsays new restaurant London House on the door step.

Features

- Two Bedrooms
- Modern Kitchen
- Balcony
- Long Lease
- Communal Garden
- Allocated Parking

Vicarage Crescent, London, SW11



Total area (approx.): 68.9 sq. m (741.6 sq. ft)
Balcony area (approx.): 2.0 sq m (21.5 sq. ft)