



## Shuttleworth Road, SW11

### £500,000

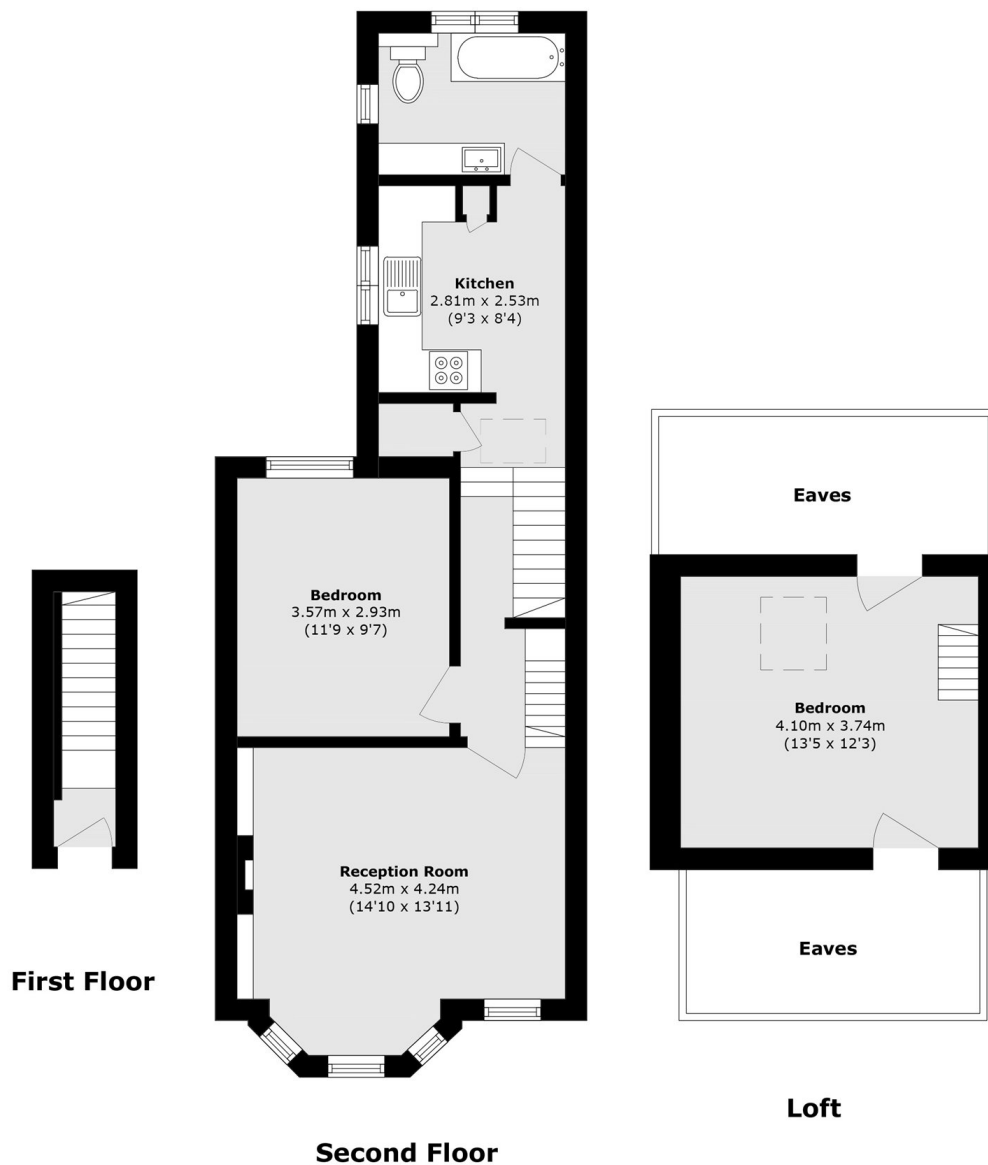
Spread across two floors, this exceptional Victorian conversion offers a large reception room, two double bedrooms, modern family bathroom and kitchen. Within the property is additional built in storage and lots of natural light.

Shuttleworth Road is a sought after street near the River Thames. Located conveniently for Battersea Park as well as easy access to the Kings Road in Chelsea. Clapham Junction railway station is also a short walk away.

### Features

- Top Floor Flat
- Victorian Conversion
- Large Reception Room
- Two Double Bedrooms
- Modern Bathroom
- Superb Location

# Shuttleworth Road, London, SW11



Total area (approx.): 68.0 sq. m (731.9 sq. ft)  
(Excluding Eaves)