



Eversleigh Road, SW11

£900,000

Dexters



Eversleigh Road, SW11

Situated on Eversleigh Road, this magnificent three bedroom house features a double reception room, open plan kitchen and dining room, modern family bathroom and a landscaped garden. On street parking is available with a permit from Wandsworth Council.

As you enter into the three story house you are welcomed by the spacious double reception room, continuing on is the modern open plan kitchen and dining room with glass doors showcasing the garden. As you ascend to the second floor you are met with a beautiful modern family bathroom with shower and bath, featuring an extra storage cupboard. Continuing through the second floor are two of the bedrooms both complete with built in storage. On the third and final floor you'll find another double bedroom.

Eversleigh Road is a residential street in the popular Shaftesbury Estate in Battersea. Clapham Common, Battersea Park and the iconic Battersea Power Station are all nearby, as are the transport links at Clapham Junction mainline train station.

Features

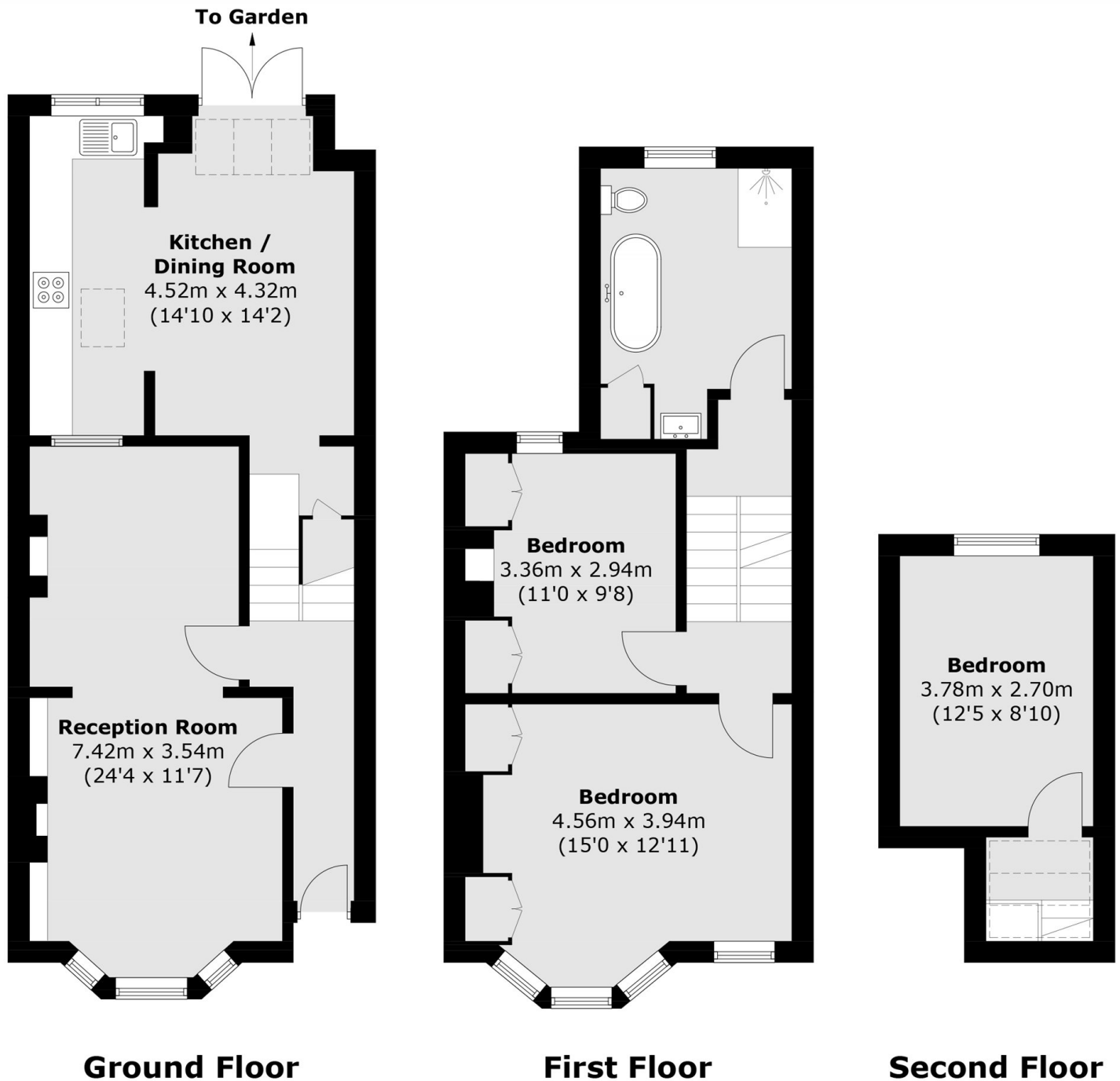
- Three Bedrooms
- Double Reception Room
- Open plan Kitchen/Dining
- Modern Bathroom
- Measuring 1159 sq. ft
- Landscaped Garden







Eversleigh Road, London, SW11



Total area (approx.): 107.7 sq. m (1159.2 sq. ft)