



Wix's Lane, SW4

£300,000

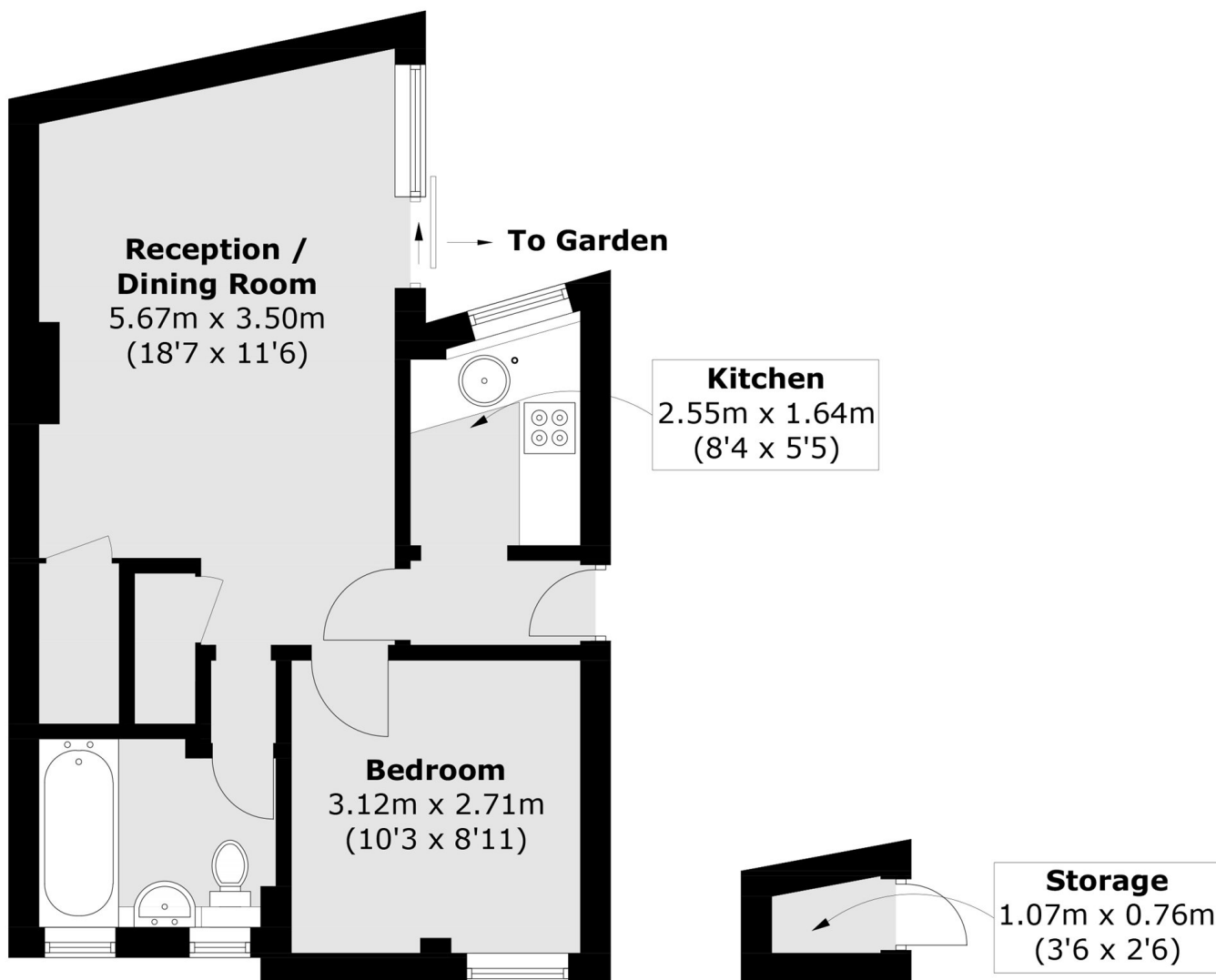
A well located one double bedroom apartment. Accommodation includes a spacious reception room/ dining area, separate kitchen, double bedroom and a modern bathroom. The property further benefits from a large communal garden with direct access, additional storage and has a very long lease (966 years).

Wix's Lane is a sought after quiet residential street located directly off Clapham Common. It is situated close to the amenities of Clapham Old Town, Lavender Hill and Battersea Rise. Clapham Common Tube and Clapham Junction station are a short stroll away.

Features

- Superb Location
- One Double Bedroom
- Large Reception Room
- Communal Garden
- Modern Bathroom
- Long Lease

Wix's Lane, London, SW4



**(Not Shown In Actual
Location / Orientation)**

Approx Internal Area: 40.4 sq. m (434 .8 sq. ft)
Storage: 0.8 sq. m (8 sq. ft)