



**Battersea Bridge Road, SW11**

**£850,000**

**Dexters**



## Battersea Bridge Road, SW11

This spectacular three bedroom apartment, features a large reception room, kitchen and two family bathrooms (inc. En suite). Highlights of this property include an exclusive balcony, communal garden, allocated garage, suitable for parking and a share of the freehold.

As you enter the property, next to the front door is the first bedroom. Either side of the wide hallway are the other two bedrooms both of which have plenty of natural light and space, as well as built in storage. With the principal including a full en suite bathroom, located next to that bedroom is the family bathroom. Directly opposite the entrance of the property is the spacious reception room perfect for entertaining. The reception then leads on to the kitchen on the right, and the property's private balcony.

Ideally situated near Battersea Park and the River Thames, Battersea Bridge Road is surrounded by an excellent choice of pubs and restaurants. The location is well connected, with easy access to Chelsea, Clapham Junction, and convenient transport links close by.

### Features

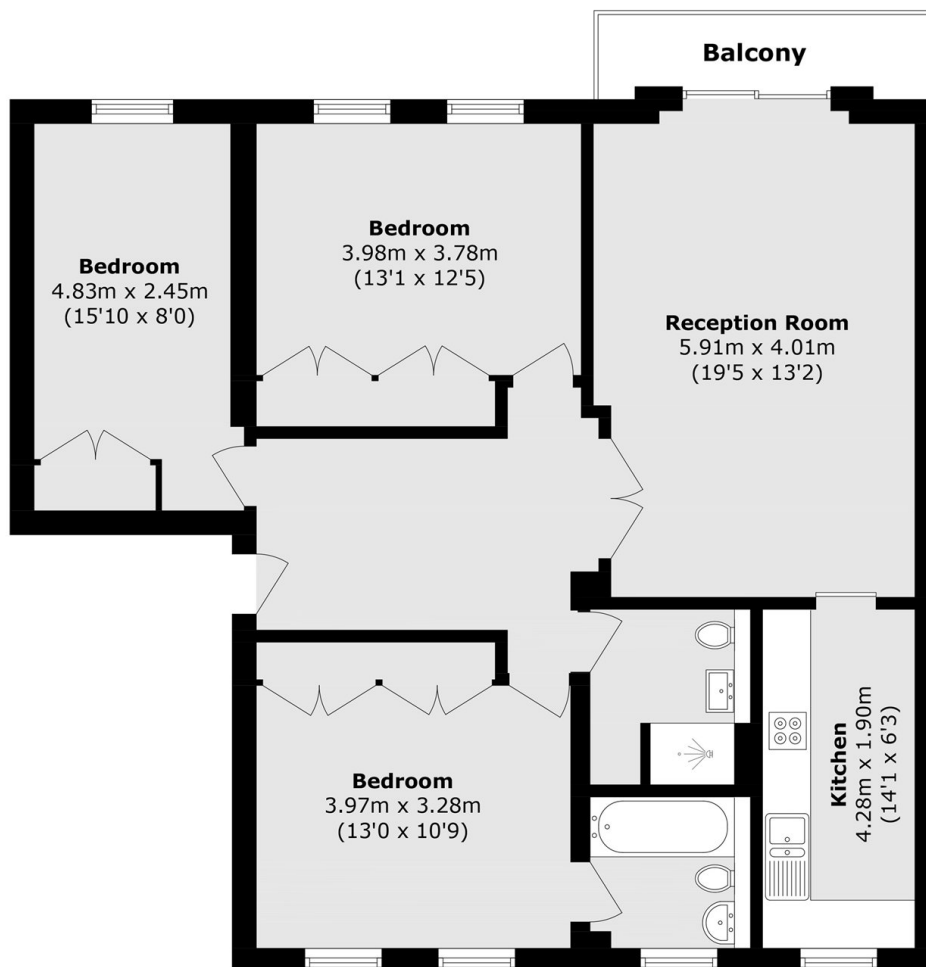
- Three Bedrooms
- Two Bathrooms
- Balcony
- Communal Garden
- Allocated Parking
- Share of Freehold







# Battersea Bridge Road, London, SW11



Total area (approx.): 98.2 sq. m (1057.0 sq. ft)

Balcony area (approx.): 4.8 sq. m (51.7 sq. ft)