



## Falcon Road, SW11

£500,000

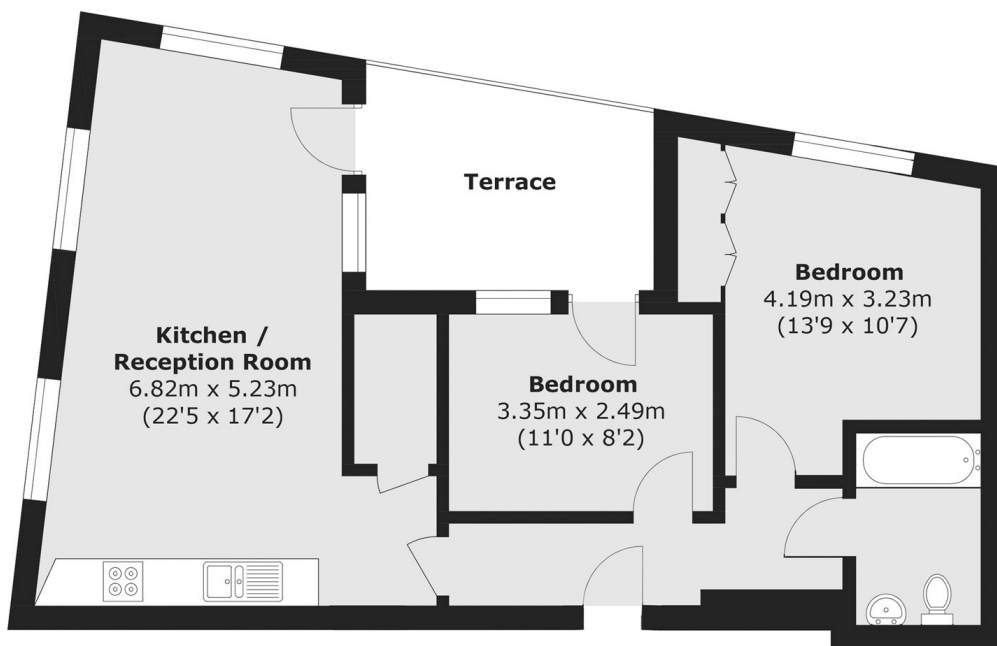
An impressive two double bedroom lateral apartment situated on Falcon Road. Comprising an exceptionally large open plan reception room, modern kitchen & dining area, family bathroom and private outside space (balcony). The property further benefits from underfloor heating, communal terrace & bike storage.

Falcon Road is conveniently located for Clapham Junction station giving connections into Victoria and Waterloo. The shops, cafes and restaurants of Northcote Road and St. John's Hill are also located close by along with Battersea Park and the River Thames.

### Features

- Open Plan Reception/Kitchen
- Two Double Bedrooms
- Private Balcony
- Family Bathroom
- Communal Roof Terrace
- Bike Storage

# Falcon Road, London, SW11



Total area (approx.): 62.0 sq. m (667.4 sq. ft)  
Terrace area : 9.4 sq. m (101.2 sq. ft)