



Walsingham Place, SW4

£1,925,000

Dexters



Walsingham Place, SW4

A modern three/four bedroom town house with a larger than average garden, garage and driveway in an enviable location spanning over 2064 Sq Ft across four floors, offering a perfect blend of space, style and functionality.

Upon entry, the property opens into a hallway with cloakroom storage, a downstairs WC, and access to the garage, which is large enough for a car and additional storage needs. To the rear, you'll find a modern kitchen providing ample space for dining and everyday living, with direct access out to a beautifully landscaped garden that is larger than average for the area. There are two generous reception rooms on the first floor, one of which can be easily converted into a bedroom. The front-facing reception room benefits from a private balcony, and the two rooms, combined with another WC on this level, allow for excellent space for hosting and dining. The second floor comprises two substantial double bedrooms, sharing a family bathroom. The third floor is arranged as a private top-floor suite, featuring a large double bedroom, alongside a bathroom and additional storage space.

Walsingham Place is a sought after, no-through road located "Between The Commons", directly off Clapham Common West Side. The property is a short stroll from Clapham South Tube and the charming amenities of Northcote Road. The open space of Clapham Common conveniently located end of the road. There is a fantastic selection of state and public schools nearby.

Features

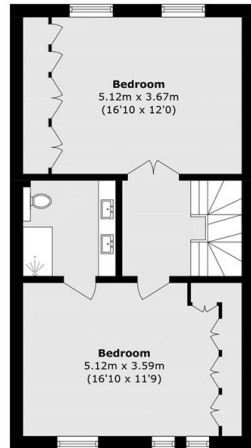
- Between The Commons
- Four Bedrooms
- Two Reception Rooms
- Private Garage & Driveway
- Great Schools Nearby
- Landscaped Garden



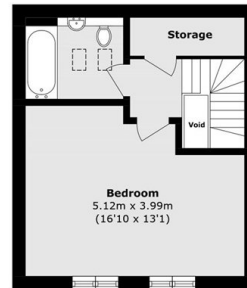




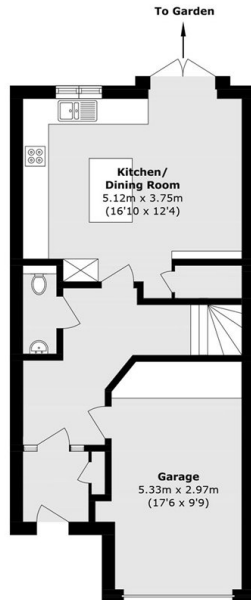
Walsingham Place, London, SW4



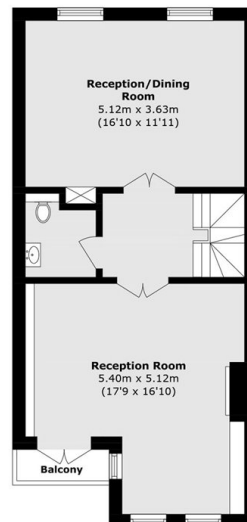
Second Floor



Third Floor



Ground Floor



First Floor

Total (approx.): 191.8 sq. m (2064.5 sq. ft)

Balcony Total (approx.): 1.4 sq. m (15.0 sq. ft)

(Excluding Void)